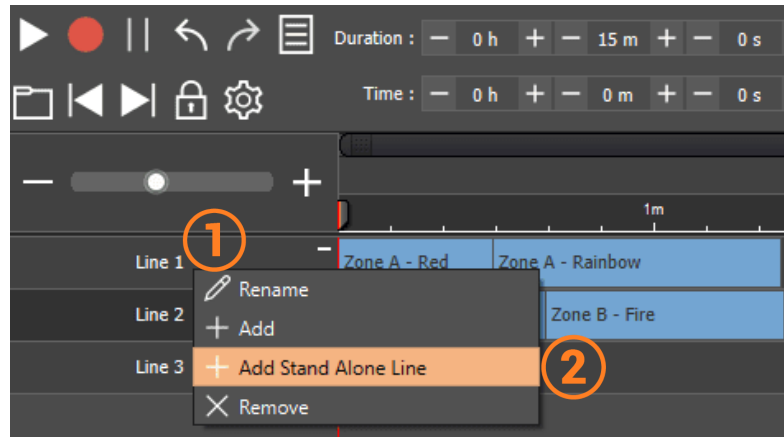


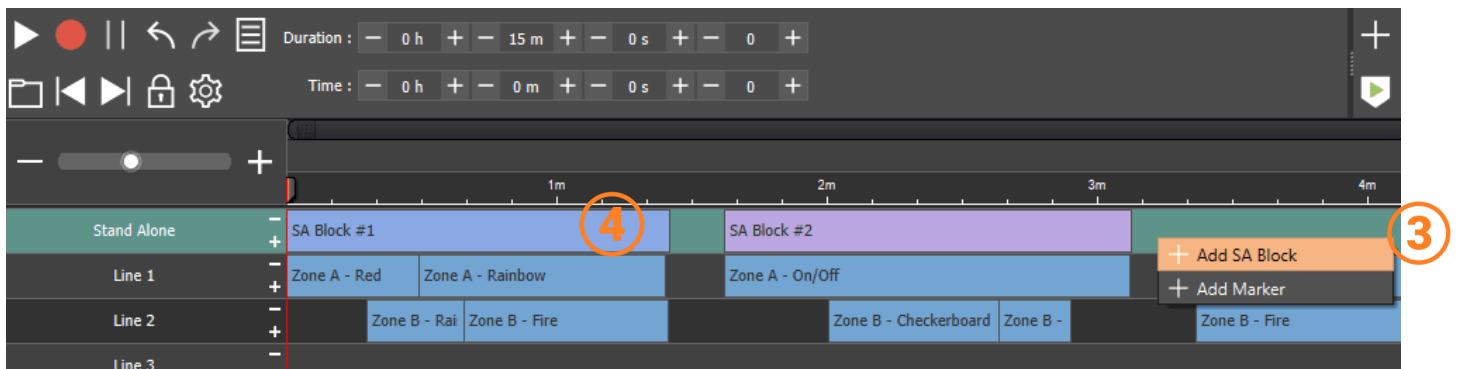
# SAVE TIMELINE IN SD CARD

Save a timeline in a compatible interface with SD Slot to play programmed light sequences in standalone.

## Create standalone Blocks in the timeline

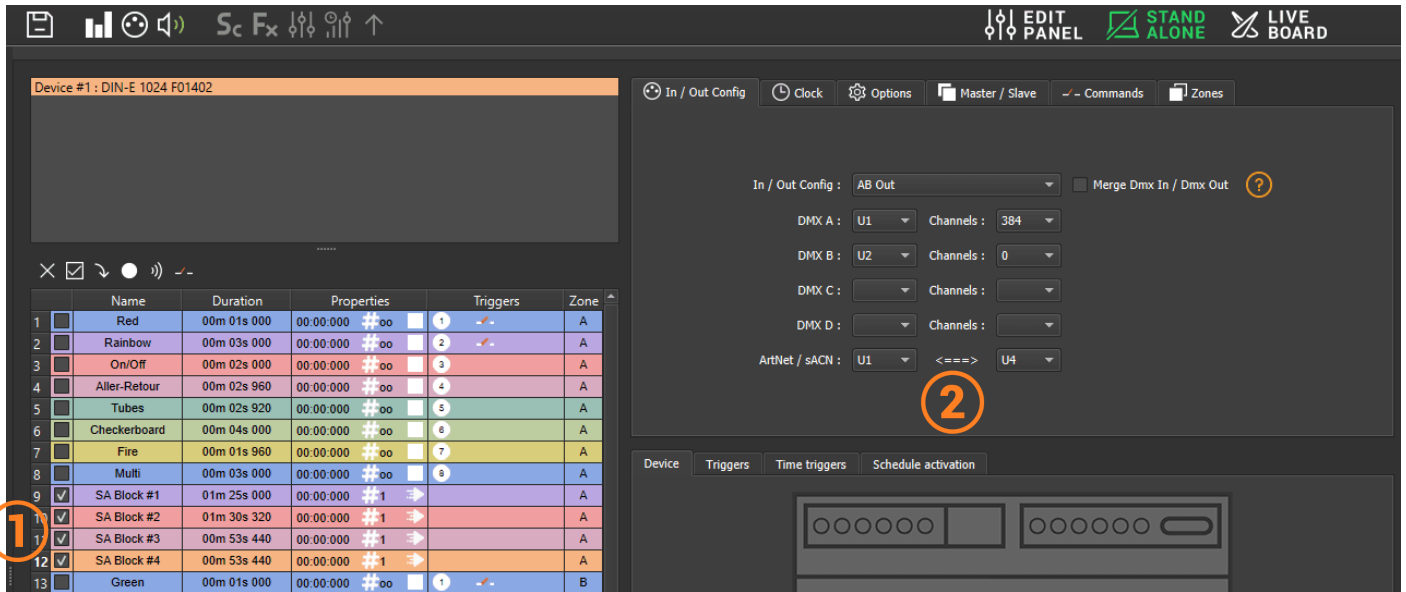


1. Right click on a line of the timeline
2. Select "Add Stand Alone Line"

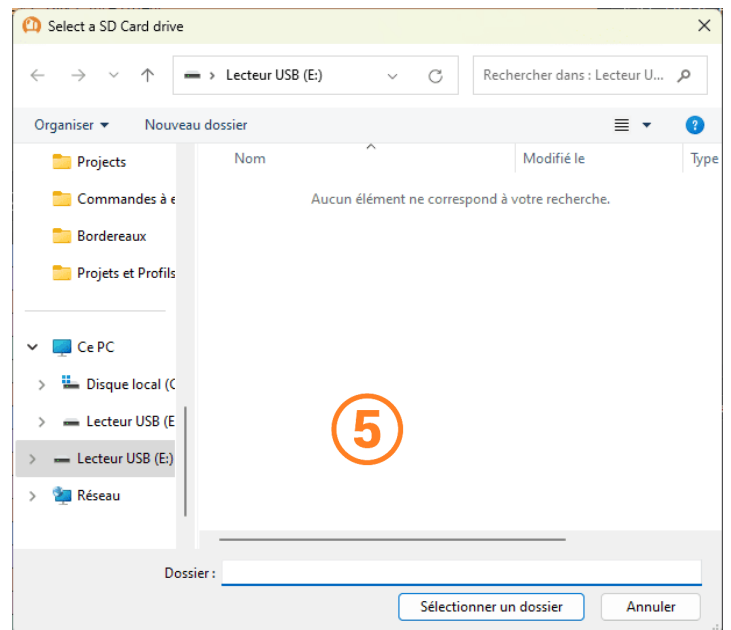
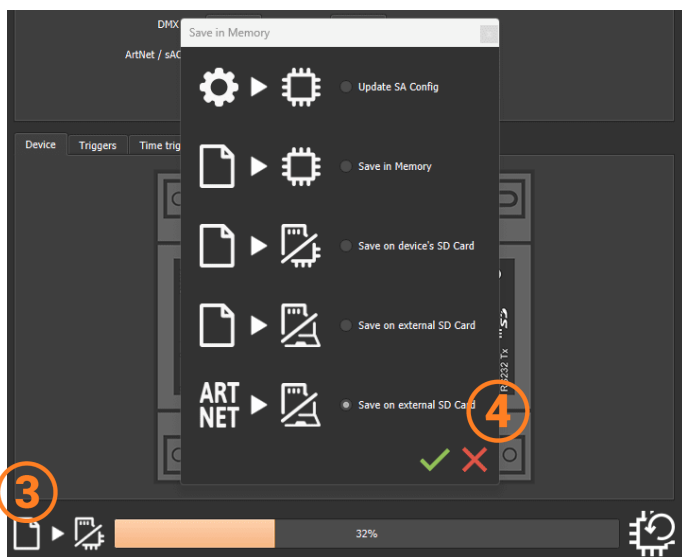


3. Right click in the "Stand Alone" line and select "Add SA Block"
4. Choose the size of the "SA Block" to match the desired sequence of the timeline. Create as many block as needed

# Save Blocks in standalone



1. Check the desired Block, it is possible to assign them to buttons or configure triggers as for a scene
2. Define the universe range that must be saved when writing



3. Click on "Save in memory"
4. Select "ARTNET>Save on external SD Card"
5. Choose the micro SD card inserted into the computer

Once the show is saved simply insert the Micro SD into a compatible interface configured in Art-Net mode. Care must be taken to ensure that the network settings of the interface are properly configured.