

# How to update firmware in bootloader mode

Update the device when it is in bootloader mode.

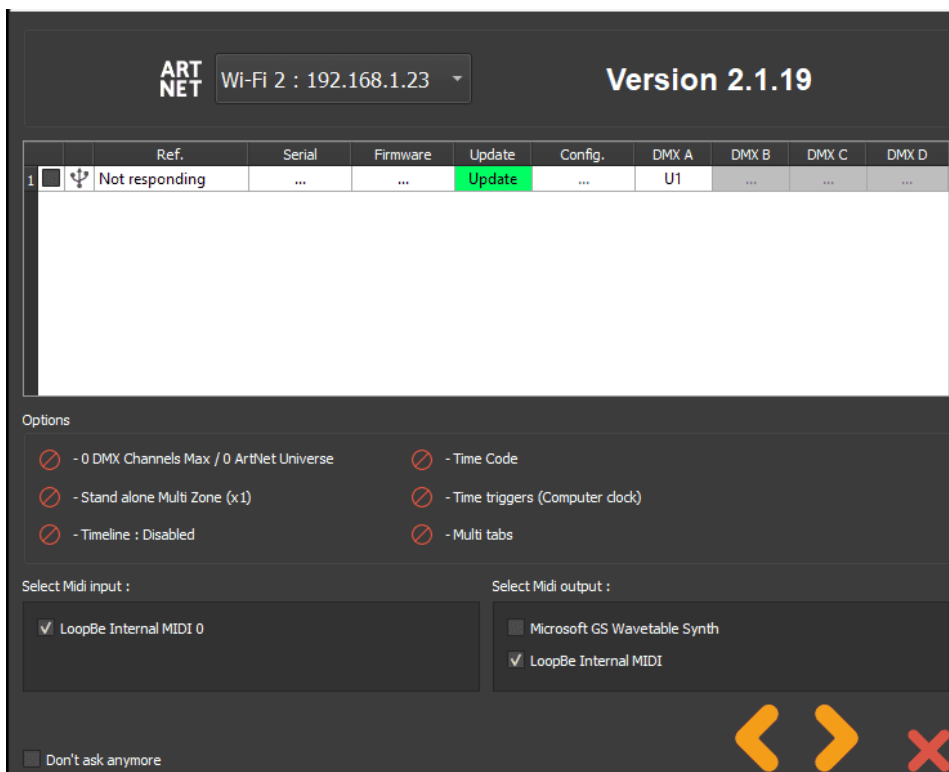
Bootloader mode failure:

- The USB signal LED(s) flash rapidly
- The LED display shows BL (CQSA/CQSA-E/SLIM)
- The device is not detected by the software, which indicates that an update is required

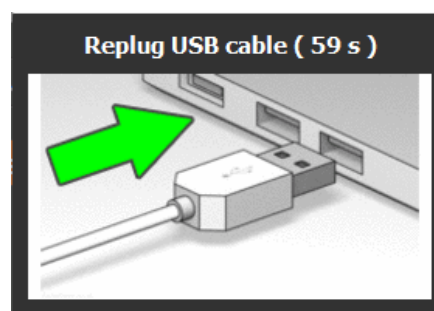
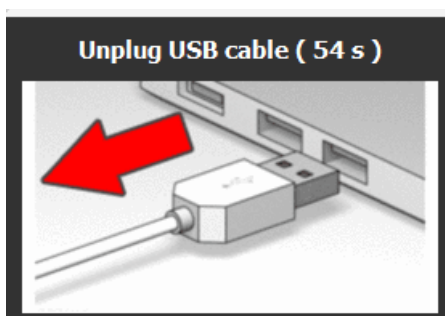
## Update the device via the software opening window

Open the software :

1. Click on "update"

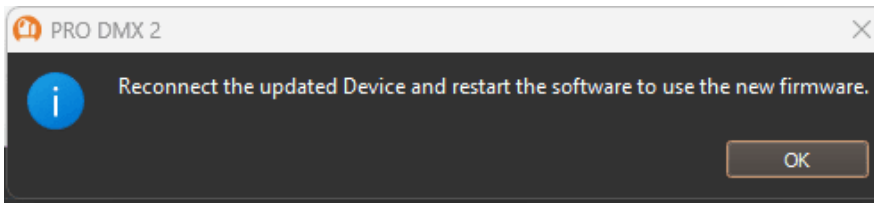


2. Unplug and replug USB cable, wait until the end of the update.



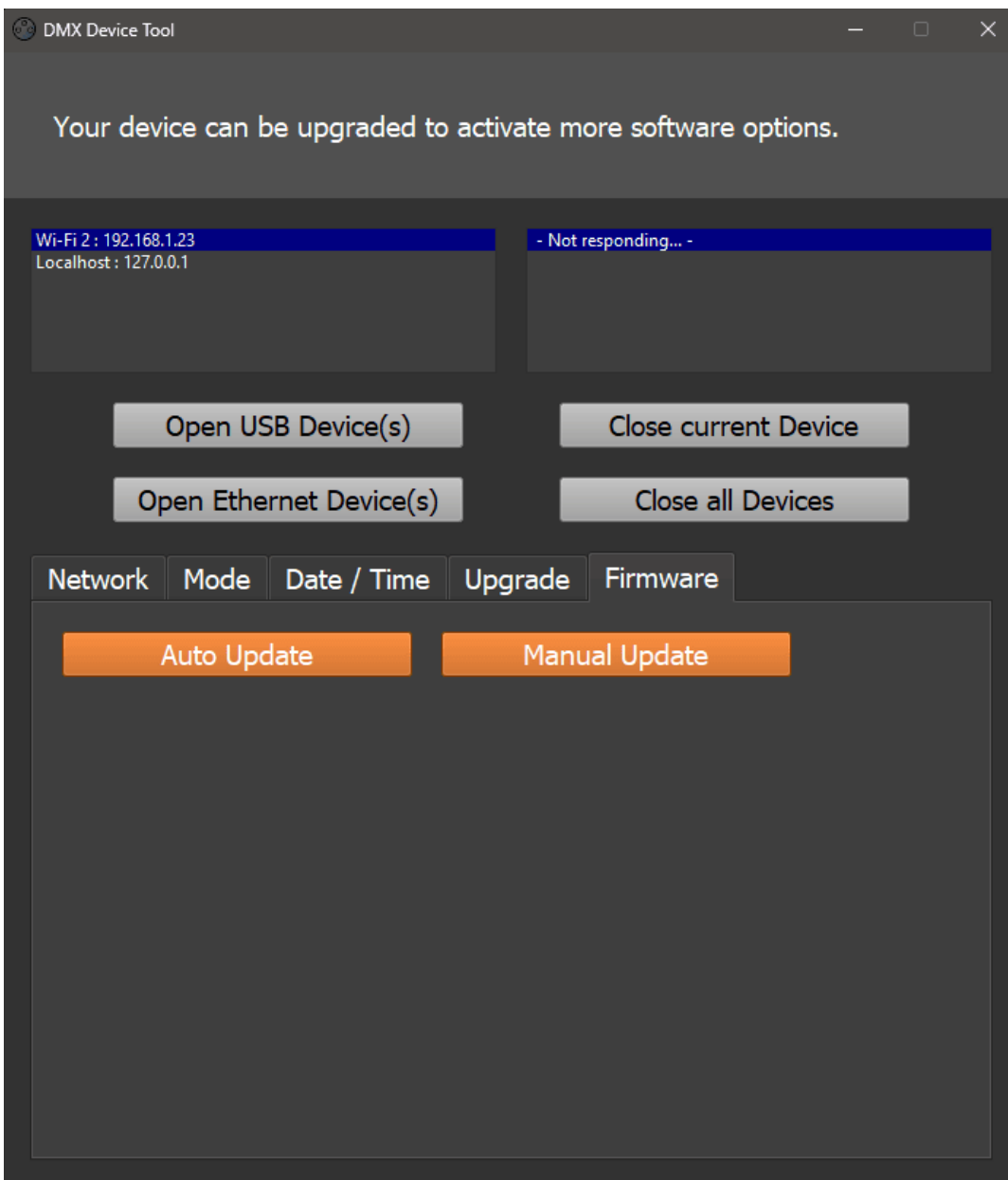
Uploading... (Remaining Bytes: 205280)

- click "ok" to Restart the software



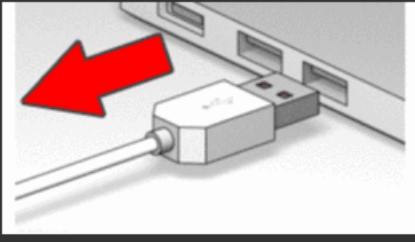
## Update the device via the DeviceTool

- Connect your device via the USB port
- Click "Open USB Device"
- Inside "Firmware" tab, click "Auto Update"

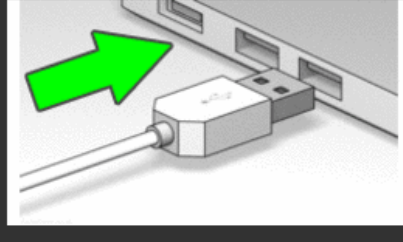


- Unplug and replug USB cable, wait until the end of the update.

**Unplug USB cable ( 54 s )**



**Replug USB cable ( 59 s )**



Uploading... (Remaining Bytes: 205280)

5. Close the DeviceTool to use the device normally

# Comment mettre à jour le firmware en mode bootloader

Mettre à jour l'appareil lorsqu'il est en mode bootloader.

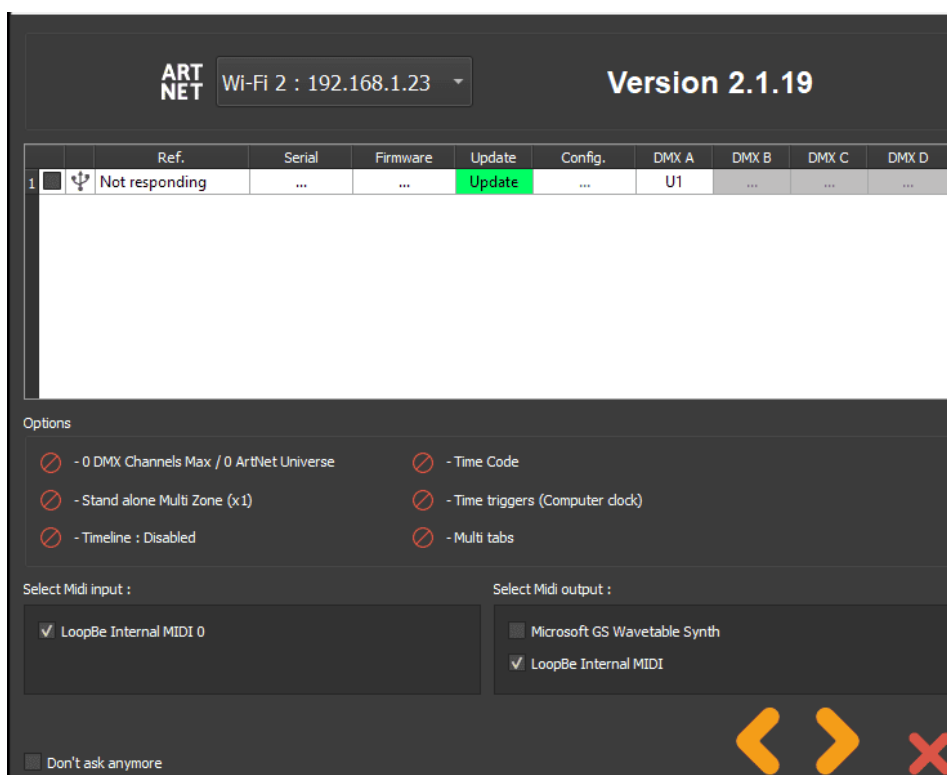
Détection du mode bootloader :

- Les LED du signal USB clignotent rapidement
- L'écran LED affiche BL (CQSA/CQSA-E/SLIM)
- L'appareil n'est pas détecté par le logiciel, ce qui indique qu'une mise à jour est requise

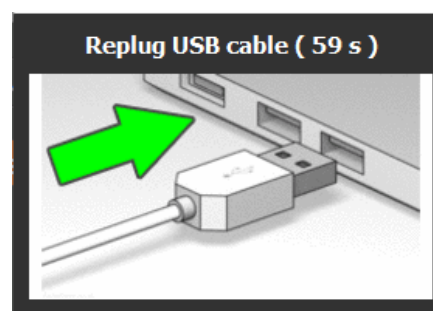
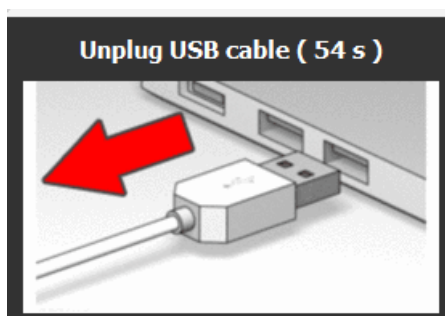
## Mettre à jour l'appareil via la fenêtre d'ouverture du logiciel

Ouvrir le logiciel :

1. Cliquer sur "Mettre à jour"

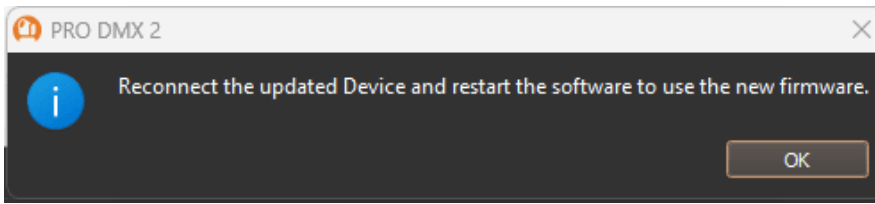


2. Débrancher et rebrancher le câble USB et attendre jusqu'à la fin de la mise à jour.



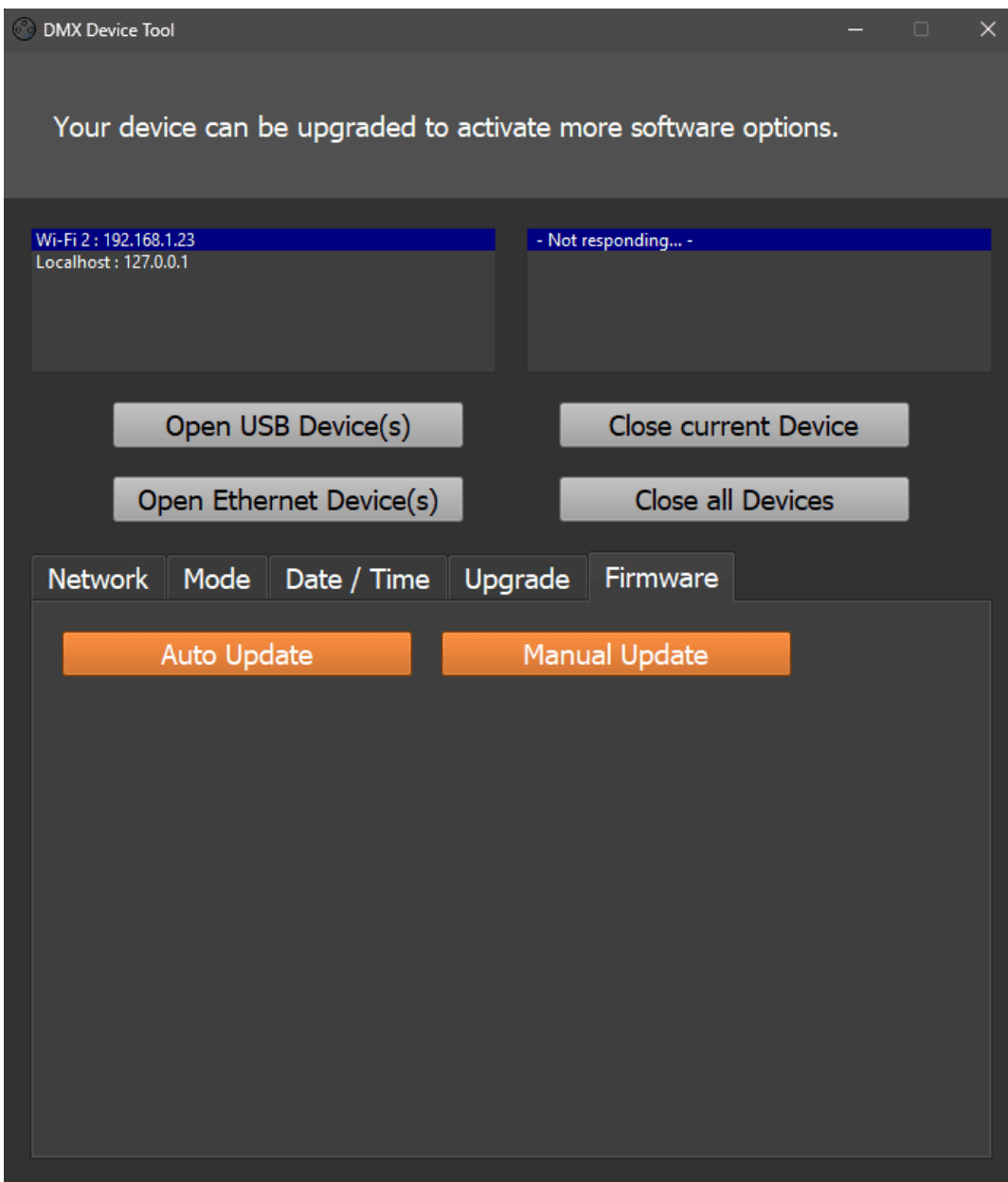
Uploading... (Remaining Bytes: 205280)

3. Cliquer sur "ok" pour redémarrer le logiciel



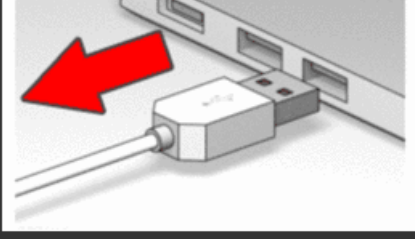
## Mettre à jour l'appareil via l'outil DeviceTool

1. Connecter votre appareil via le port USB
2. Cliquer sur "Ouvrir l'appareil en USB"
3. Dans l'onglet "Firmware", cliquer sur "Mise à jour automatique"

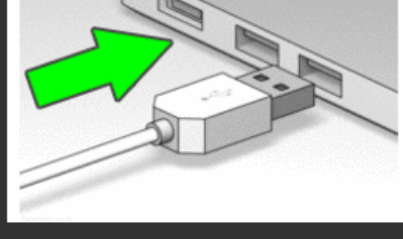


4. Débrancher et rebrancher le câble USB et attendre jusqu'à la fin de la mise à jour.

Unplug USB cable ( 54 s )



Replug USB cable ( 59 s )



Uploading... (Remaining Bytes: 205280)

5. Fermer l'outil DeviceTool pour utiliser l'appareil normalement.