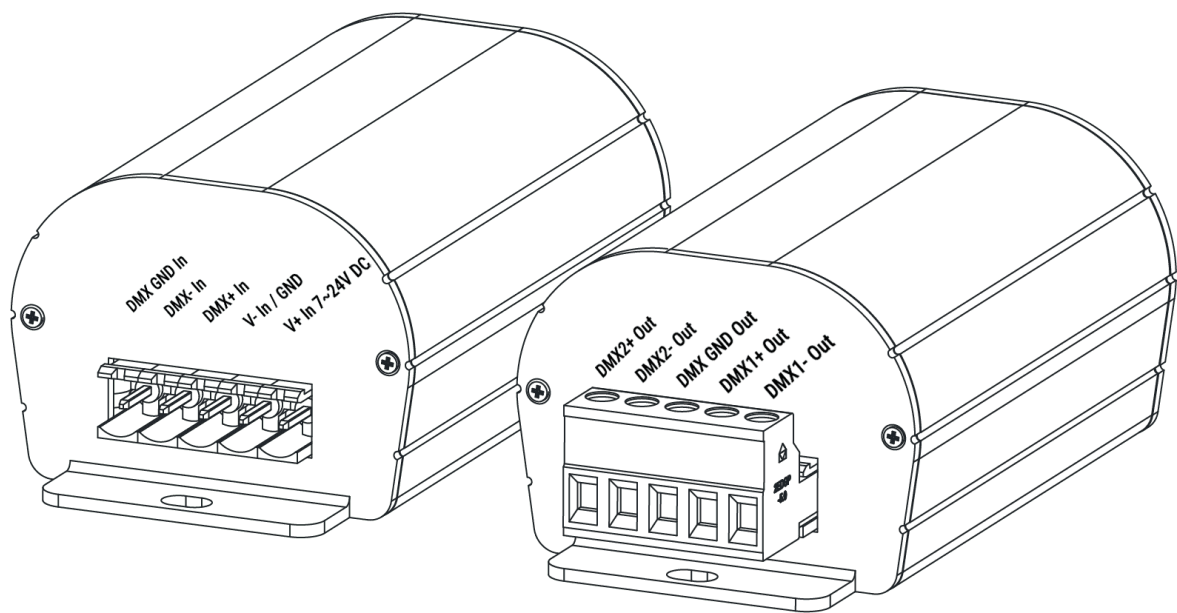


# SPLIT RDM

## DMX Splitter & Booster



Datasheet & Quickstart Guide

## Table of content

Introduction.....	4
Features.....	4
Housing connectivity.....	5
Front panel.....	5
Back panel.....	5
Wiring diagram .....	6
Housing dimensions in mm.in .....	7
Front with Terminal Block .....	7
Back without Terminal Block .....	7
Top.....	8



Congratulations on your purchase of a CHROMATEQ controller.

Please read this manual carefully and thoroughly before using the SPLIT RDM Chromateq.

The information presented here provides a useful introduction to the wide range of features, settings and functions available in this compact and versatile SPLIT RDM.

The SPLIT RDM Technical Manual is written in English and French.  
(Le manuel technique du SPLIT RDM est rédigé en anglais et en français.)

All products and software are developed and designed in France.

CHROMATEQ SARL  
191 Allée de Lauzard 34980 St Gély du Fesc FRANCE VAT: FR18521458034 Siret: 52145803400027 Web & E-mail:  
www.chromateq.com Phone: +33 952210755 / +86 13422062209 Whatsapp: +8613422062209 Wechat: Chromateq QQ:  
2908265661

Twitter: <https://twitter.com/Chromateq>  
Facebook: <https://www.facebook.com/ChromateqCompany/>  
YouTube: <https://www.youtube.com/c/chromateq>

#### Copyright Information and Disclaimer

Copyright © 2026 - CHROMATEQ. All rights reserved.

No part of this publication may be reproduced, distributed or transmitted in any form or by any means whatsoever, including photocopying, recording or other electronic or mechanical methods, without the prior written permission of the publisher, except in the case of brief quotations in criticisms and certain other non-commercial uses permitted by copyright law.

For any request for authorization, write to the publisher at the address above.

#### Trademark credits

Microsoft and Windows are U.S. registered trademarks of Microsoft Corporations. Art-Net™ - Designed by and Copyright Artistic License Holdings Ltd. All other products mentioned herein may be trademarks of their respective ® companies.

#### Package Contents

1x SPLIT RDM  
1x 9V Power supply unit  
1x Technical documentation

**Caution: Check the contents of the package and the condition of the interface after unpacking! Contact your supplier if something is missing or is damaged. Do not use the device if it appears to be damaged!**

## Introduction

With its tiny size, power protections and RDM capacity, the SPLIT RDM duplicate the signal and is an essential tool for all your lighting installations and DMX wiring.

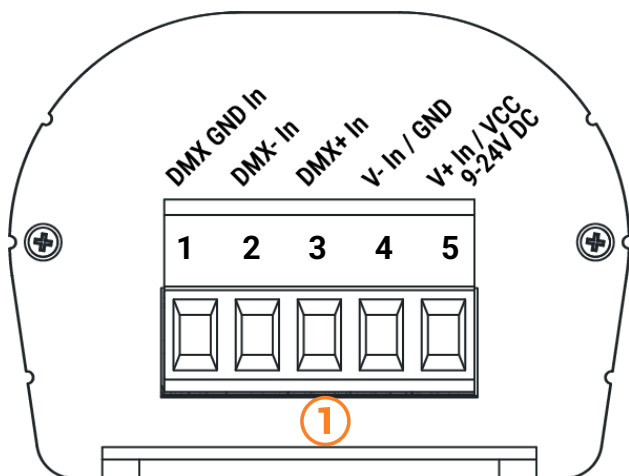
The splitter device takes signal from a DMX point to raise the data signal into 2 identical output ports. DMX signal is boosted, amplified and DMX in signal are raised to transmit data to a longer distance on your DMX installation and long distance wiring. The high voltage protections can secure the installation and protect your lighting and all control equipment.

## Features

DMX output	2x512 channels (insulated + boost)
Ports	DMX 512: 1 in + 2 Out
Connector	Screw terminal block
Protection and insulation	3KV on DMX, 1.5KV, 0.3A on DC Power
Power supply unit (PSU, included)	9V, 0.5A EURO; 100-240V~50/60Hz
Dimensions (mm)	H : 103 (4.06 in ) / W : 50mm(1.96in) / D : 37,5mm (1.47in)
Net Weight	0.1 Kgs
Gross weight	0.16 Kgs
Power / Consumption	0,43 W
High Voltage Protection	Yes, fuses & diodes
Housing	Strong Aluminum
Operating environment	Indoor
IP rating	IP40
Storage	keep dry
Operating Temperature	-45~+85°C
Certifications	CE, RoHS
International Warranty	yes, 1 years

# Housing connectivity

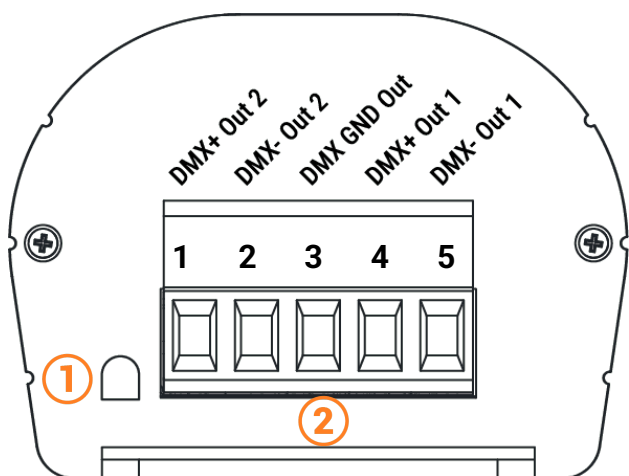
## Front panel



### 1. Terminal Block Connector with screws :

1. Ground DMX Input
2. DMX - Input
3. DMX + Input
4. V- Input / Ground
5. Power Input VCC 9~24V DC

## Back panel



### 1. LED signal

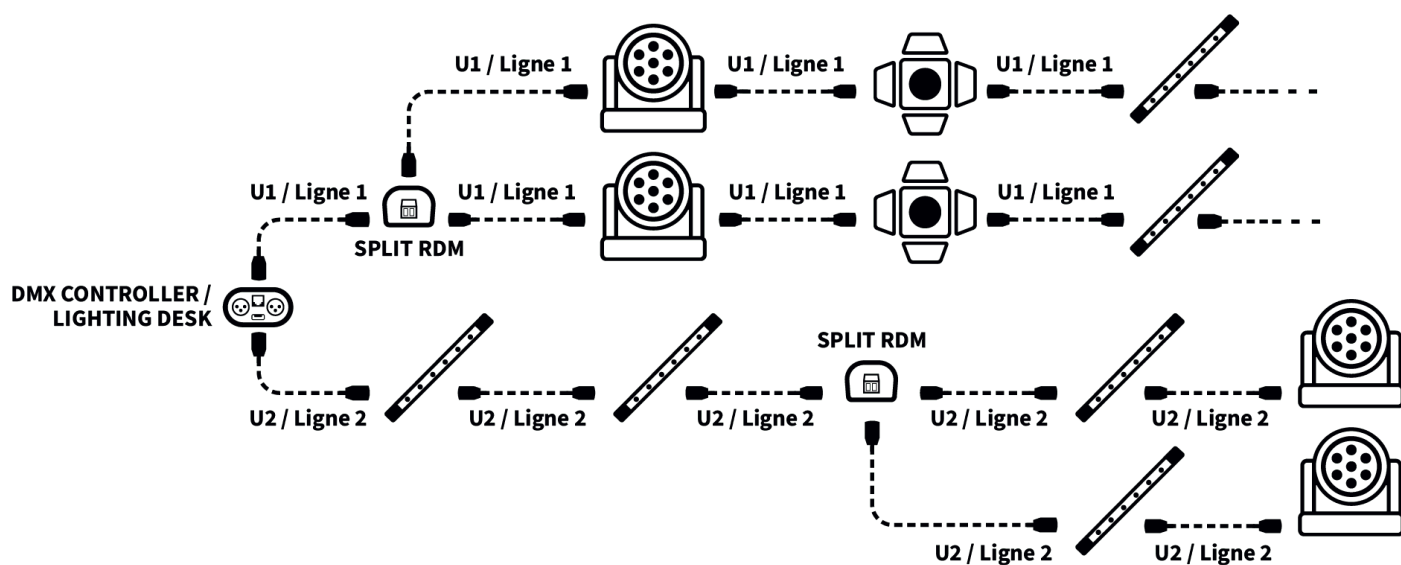
### 2. Terminal Block Connector with screws :

1. DMX2 + Output
2. DMX2 - Output
3. DMX Ground Output
4. DMX1 + Output
5. DMX1 - Output

## USB Signal LED operating states

OFF	Interface not powered (check the USB cable or the power supply)
ON	Interface powered
Flash x3	RDM communication running

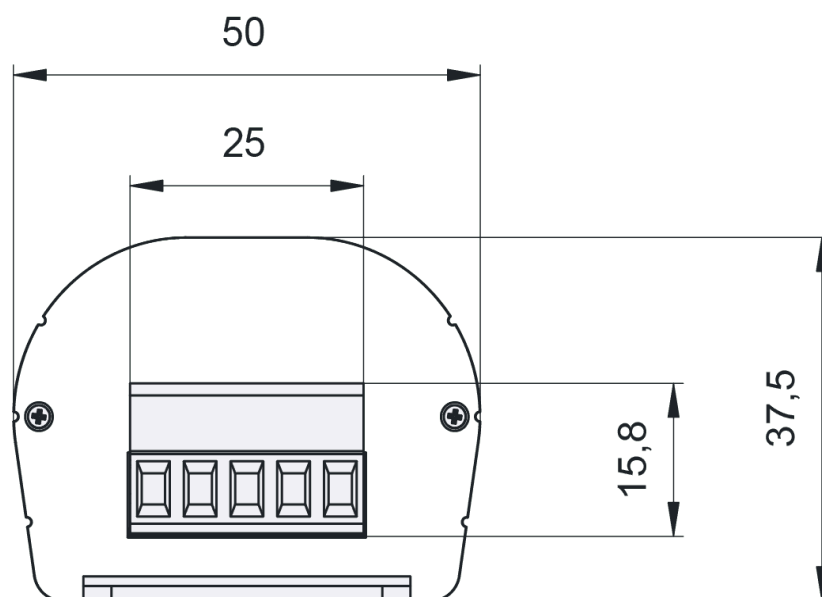
# Wiring diagram



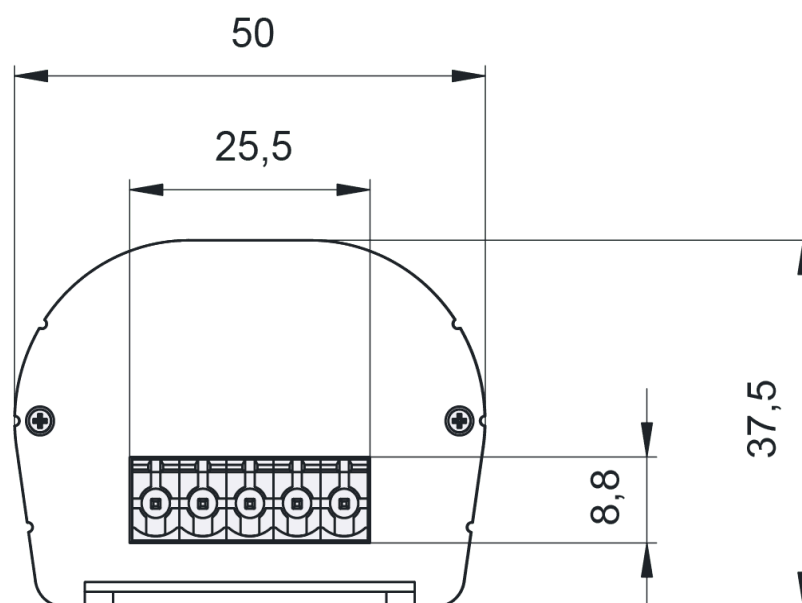
# Housing dimensions

## Front with Terminal Block

Dimensions in mm



## Back without Terminal Block



## Top

