



PRO DMX 2

Powerful and intuitive **FREE** lighting software

For all **DMX**, **Art-Net**, Live and Architectural projects.

DMX



RDM



ART NET



UDP



RS232



LAN



USB-C



TIME



3D



APP



DRY-C



CLOCK



YEAR



MIDI



MTC



Discover what makes **PRO DMX 2** an essential tool.

New features

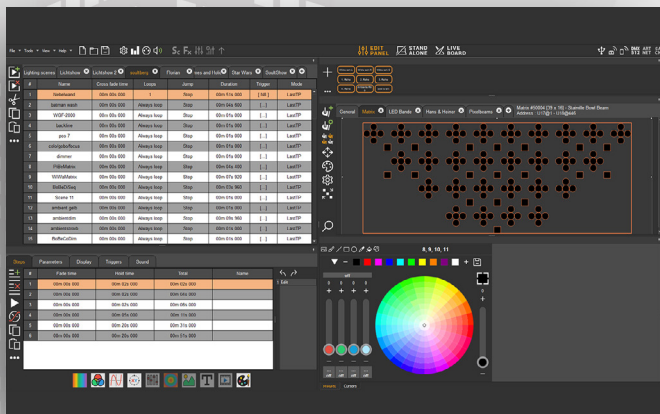
- **Profile and library editor** with import and conversion CP1, Txt and XML file (from GMA 2)
- **Quick DMX Patch** with simplified wizard
- **Advanced RDM and RDM Patch**
- **Wi-Light APP compatible** for easy remote
- **MORE XY, COLOR EFFECTS**
- **LIVE COMMANDS**

3 working main panels

- **Edit panel** : Patch, program & create scenes, cues and sequences, add triggers.
- **Live board** : Control, customize your screen & play Live.
- **Standalone panel** : Choose scenes, setup triggers, simulate and write in memory.



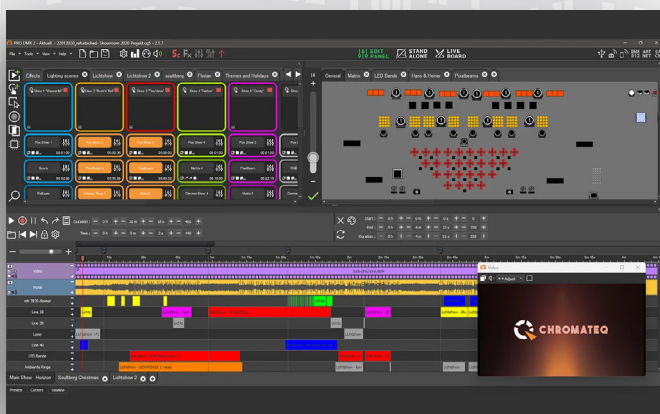
Two user modes to suit all levels



A user friendly and simplified **PLAYER MODE**

For quick and easy management of small and medium size projects and architectural installations.

- Create DMX steps or cues and set up scenes organised in lists.
- Modify or add your effects directly in scenes.
- Display all your work in a list with a minimum of options.
- Organise your zone by tabs.



An advanced **PRO MODE**

For complete, live personalized sound to light control.

- Access many more options , like timeline and trigger buttons
- Add trigger buttons to group scenes play/stop
- Synchronise your lighting show on the timeline with our audio and video players.



Key Features of PRO DMX 2

Profile Editor

A complete tool to create your new fixture profiles by drag and drop and enrich the library of 18,000 profiles already available sorted by manufacturer.



RDM, DMX and ART-NET (In/Out)

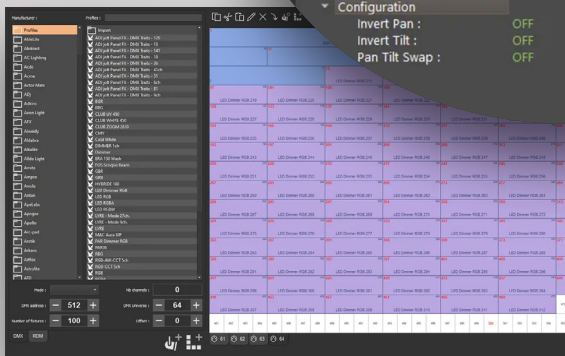
Remotely configure the addresses and modes of your RDM compatible fixtures, directly from the software, and receive your fixture state informations.

DMX IN/OUT compatible with all DMX equipment and integration of lighting desk or external controllers through DMX IN.

Reduce wiring and make it easier to integrate your Art-Net devices and fixtures by using an Ethernet Local Area Network (LAN) to send DMX signals through Art-Net.

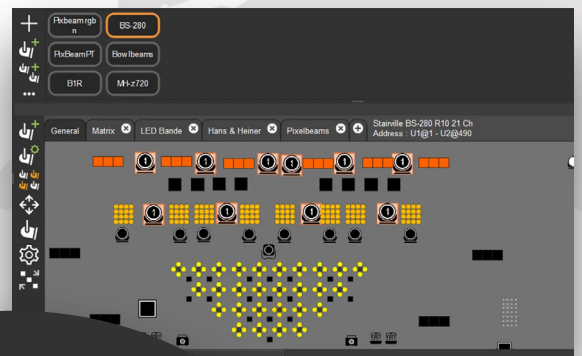
Advanced or quick patch up to 64 universes

Choose between a quick DMX patch or an advanced configuration to precisely organise your fixtures or matrix DMX addresses and manage large-scale projects with control over up to 64 DMX universes.



Fixture viewer and groups

Easily organise your lights and fixtures according to your stage and plan, modify their appearance, position and size, create group tabs and buttons, and access even more customisation options for a faster workflow.

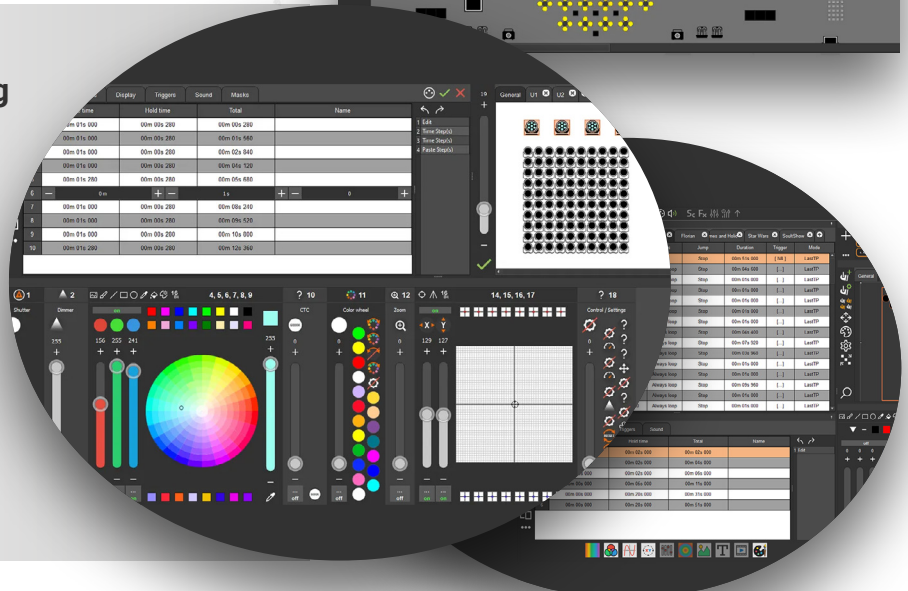


Step by step easy programming

Use the fixtures cursors, presets and pickers then add steps as a DMX memory to your scene. Arrange fade and hold times for each step.

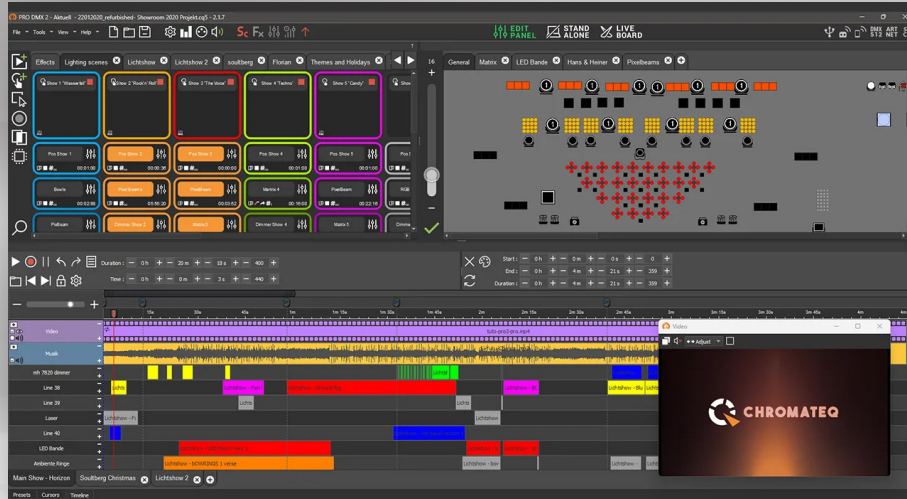
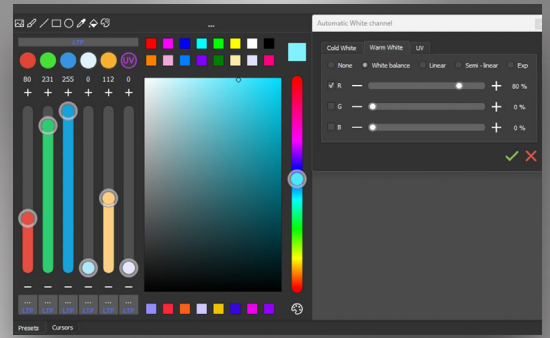
Preset and advanced controls

Program your lighting effects quicker and easier thanks to customisable tools such as the channel Presets, the colour picker for RGMWA+ and the XY picker for Pan and Tilt movements.



RGB-CW-WW-UV color balance management

Optimize the color rendering of your effects through detailed component management. Up to 6 colour components: Red, Green, Blue, Cold White, Warm White or Amber or UV.



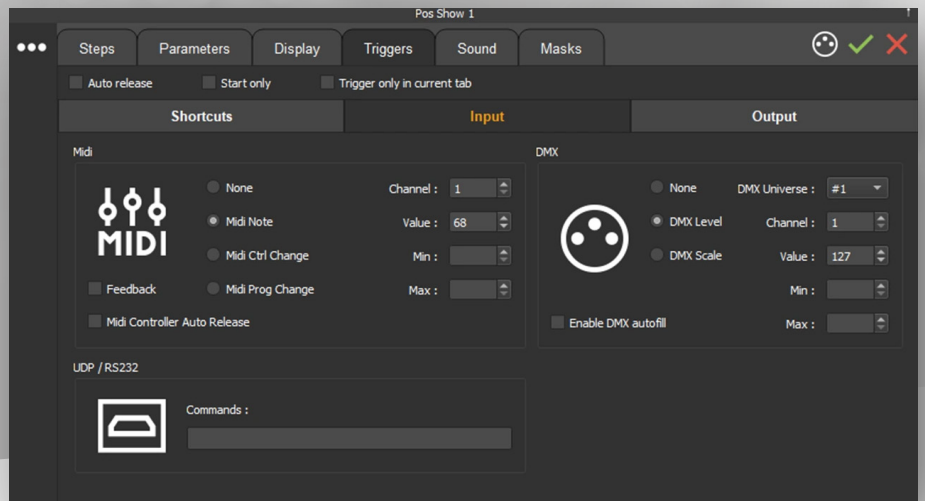
Audio and video timeline synchronization

Program your show and in few clicks, drag and drops scenes and media files on the lines, add markers, adjust timing, add start, stop, pause and jump points on several part of the timeline.

Extensive possibilities, for all types of projects

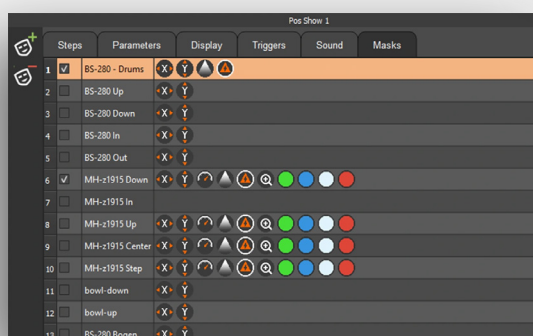
Multiple triggers

Run your live and stand-alone installations on all situations, thanks to a wide range of trigger options like: MIDI, DMX, UDP, Art-Net, Smart Contacts, RS232, keyboard, mouse, Infrared, light intensity, Audio Beat, Clock and calendar.



DMX masks for scenes

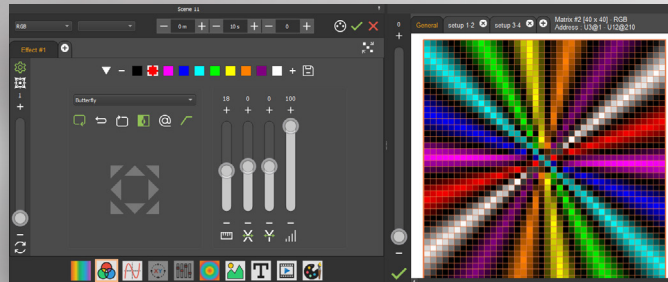
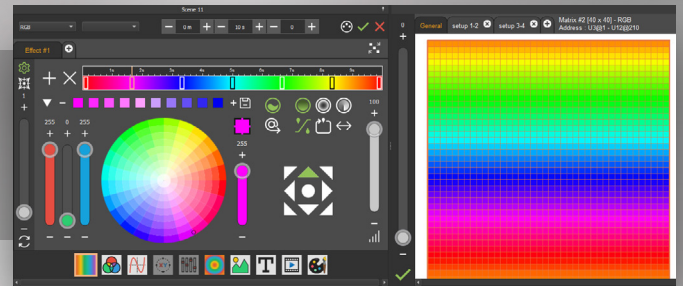
DMX masks give a priority on several DMX channels in you scenes when applied. Change some DMX levels quickly to all your scenes in only 1 Mask action.



New effects generator

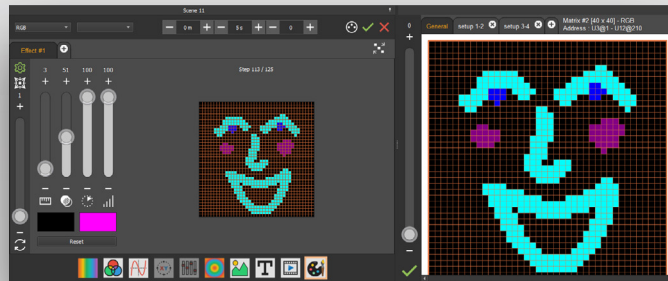
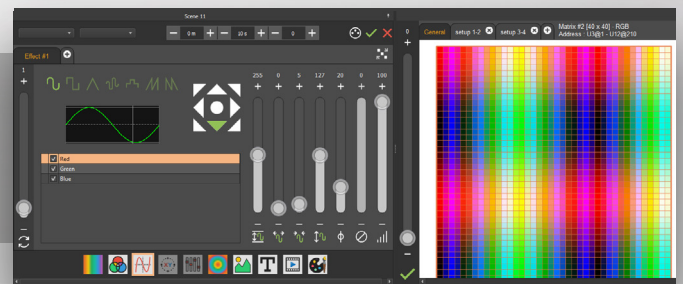
• Gradient

Create a coloured gradient automatically and customise the settings to enhance your effect with colour speed and appearance.



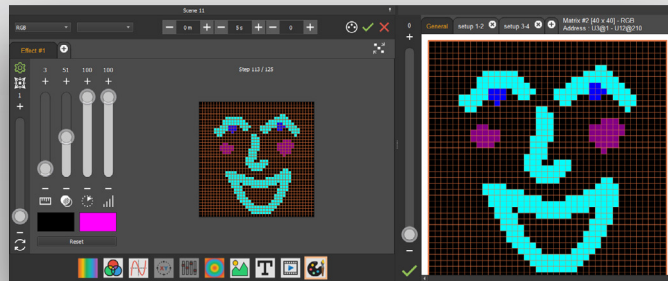
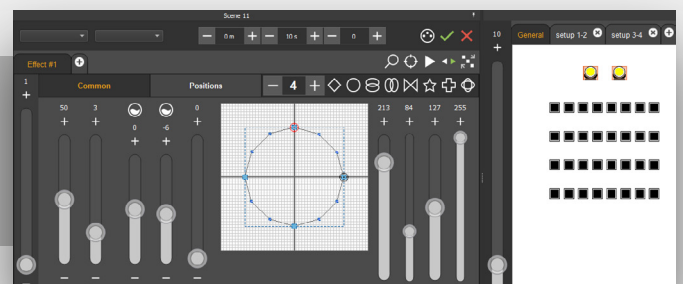
• Sequencer

Choose a colour sequence from the list of sequencer effects. Customise the settings to improve the effect colours, fades, direction and speed.



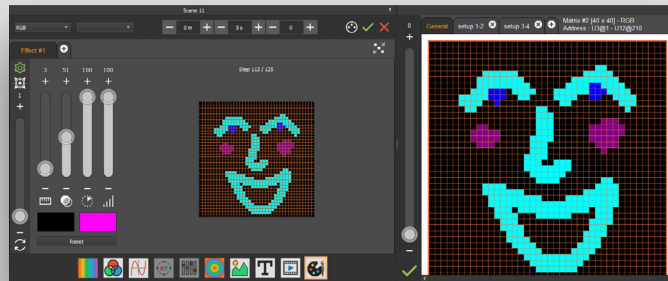
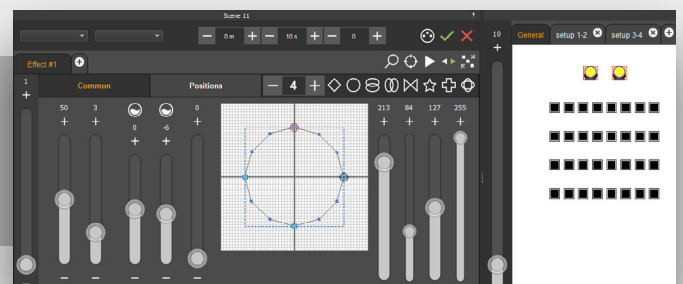
• Curve

Create effects by setting curves by level and on each type of channel.



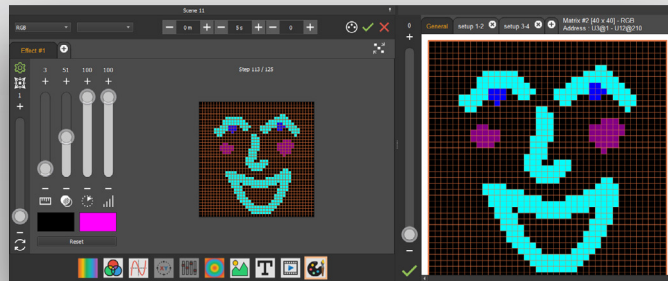
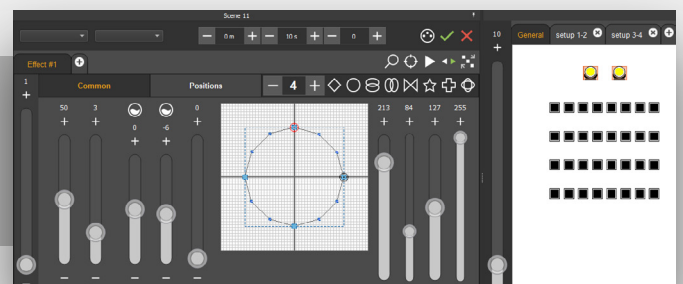
• Paint

Create animated and colorful shapes directly with the mouse.



• Pan-tilt

Create a moving effect for a group of fixtures including the Pan and Tilt function, the effect is based on simple shapes and XY axes. Setup a shape effect independently to different fixture position. Customise settings to improve the movements, positions and speed.



LED Matrix effects

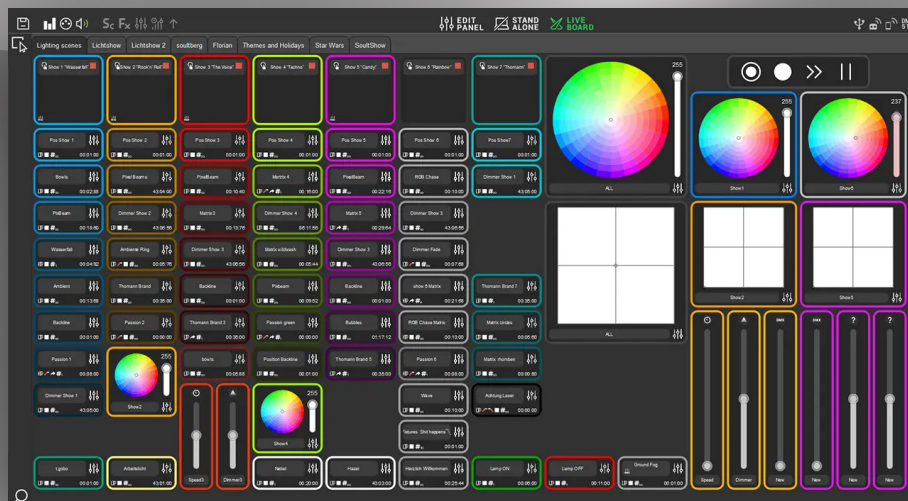
Designed for LED matrixes, you can quickly insert:

- Animations from our library classified by category.
- Your own images or video contents.
- Customized static or animated text.

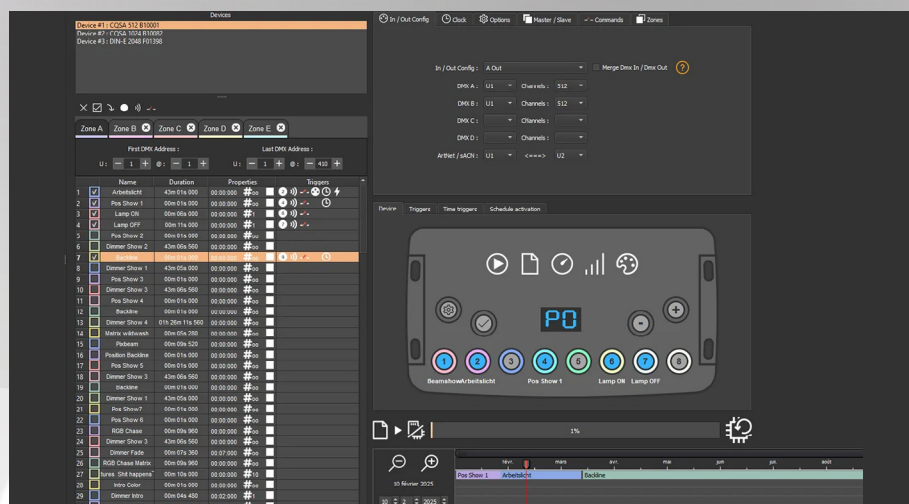
Matrix can reach up to 64 DMX universes in PRO DMX 2 and 512 universes in PIXEM.

Customizable for more performance or ease of use

Enhance your Live board with additional controls and organise scenes and triggers to ensure quick execution of your show.
Lock and secure the Live board user interface (IHM) with a password.



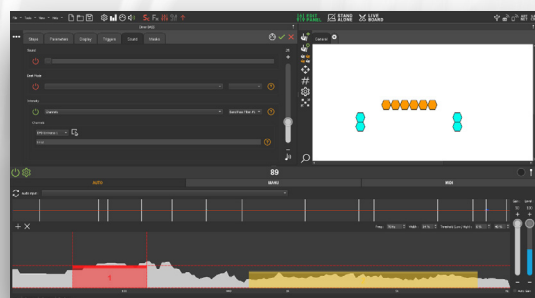
Unrivalled live and stand-alone performance



Stand-Alone mode

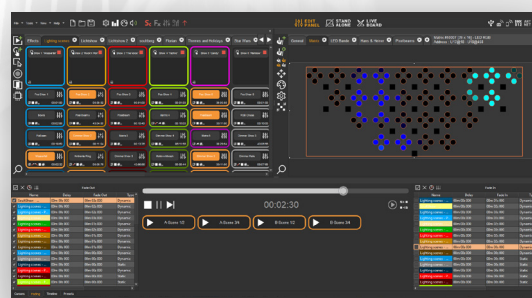
Playback scenes without a computer. Save your scenes to the device's internal memory or an SD card.

Program your Chromateq device by assigning triggers to scenes and scheduling their activation throughout the year.



Audio beat and intensity

Our audio analysis tool gives the Audio intensity from a range of audio frequencies and the beat of the music.
You can quickly animate and synchronise your light effects to an audio source.
Choose the audio source, define a range of frequencies and the intensity level, tick the parameters, then apply the Audio levels to your scene or DMX channels.



Crossfade Tool

Manage simultaneous fading transfers between selected scenes, in addition to the existing fade in and out features of scene and effect buttons.
Select scenes, set the static or dynamic fade in and out time then create a fade trigger button.

Greater flexibility thanks to application compatibility

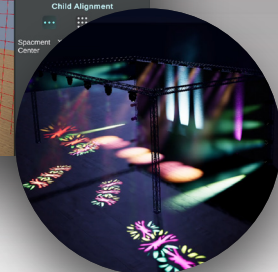
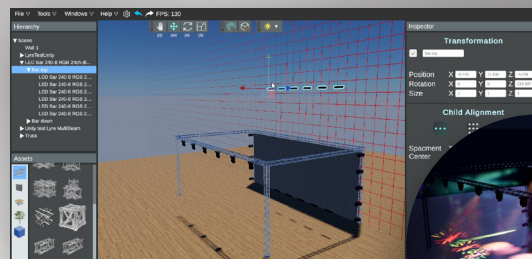


Wi-Light easy remote commands APP

Remote control your show or devices anytime, anywhere, using a simple Wi-Fi or LAN connection.

Download the free APP and install it to your phone or tablet to directly command the software or a Chromateq-E device.

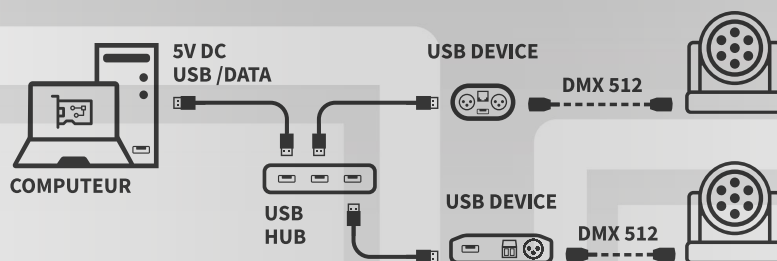
The App is user friendly and customisable, can play scenes, control channels and RGBW colours.



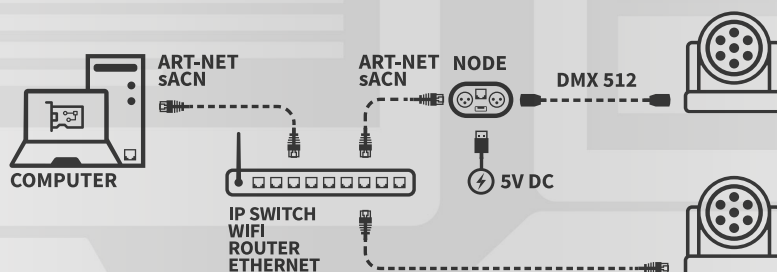
3D viewer in real time

Simulate your light show with Studio DMX and Pro DMX 2. Fixtures from the DMX patch are automatically added in the 3D Studio DMX software. Build your stage easily with the truss assembling tool and object importation. Then 3D simulate your light show prior to the final installation.

USB connection



Ethernet connection



Free Software & Application :

Software package & APP/API :

<https://chromateq.com/dmx-software-downloads/>

2010 - 2025 Chromateq SARL - Chromateq - All rights reserved

Configuration minimale PC:

Windows, Mac OS, Linux (32 and 64 bits)

2Ghz CPU (2 cores), 8 Gb RAM

2Gb RAM graphic card (for 3D only)

600 Mb disk, 1920x1080 resolution

1 USB port (device)

1 Ethernet port (for Art-Net & sACN)



191 Allée de Lauzard
34980 St Gély du Fesc, FRANCE
Web : www.chromateq.com
Email : info@chromateq.com

Tél : +33 952210755
Wechat : Chromateq
WhatsApp : +8613422062209
QQ : 2908265661