


How to update firmware in bootloader mode

Update the device when it is in bootloader mode.

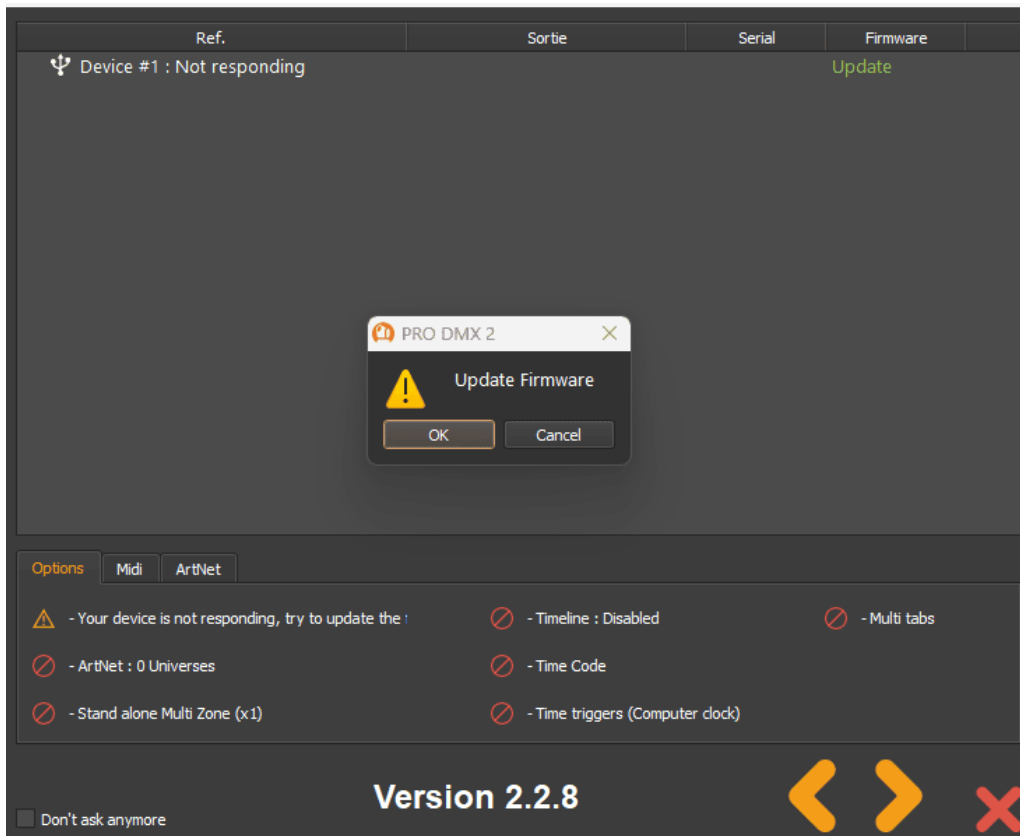
How to know when the device is in Bootloader mode after power it on (each device has a different bootloader sequence):

- The USB signal LED(s) flash rapidly
- Or the Ethernet port LED flash rapidly
- The LED display shows BL  (CQSA/CQSA-E/CQSA-E2/SLIM)
- The device is not detected by the software, which indicates that an update is required

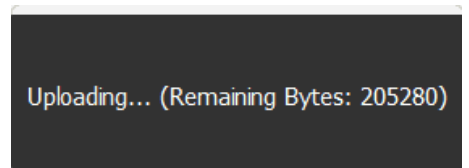
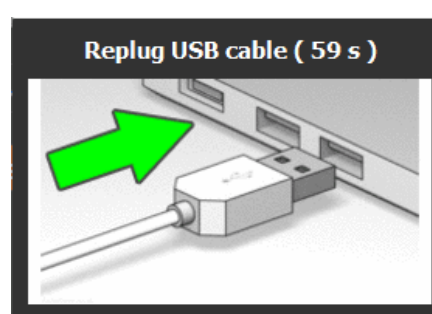
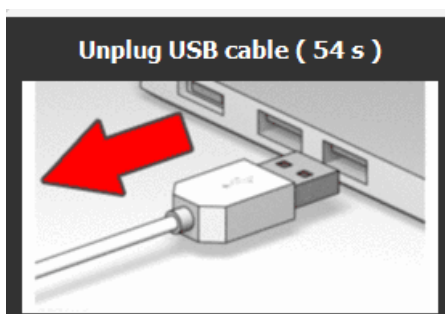
Update the device via the software opening window

Open the software :

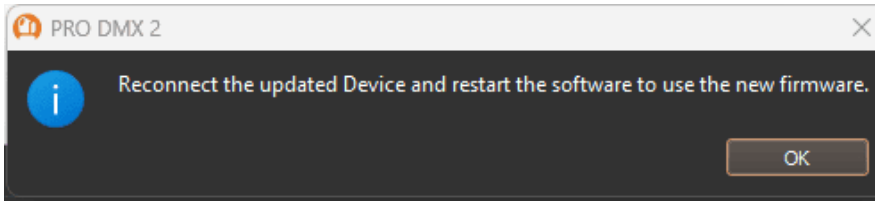
1. Click on "update"



2. Unplug and replug USB cable, wait until the end of the update.

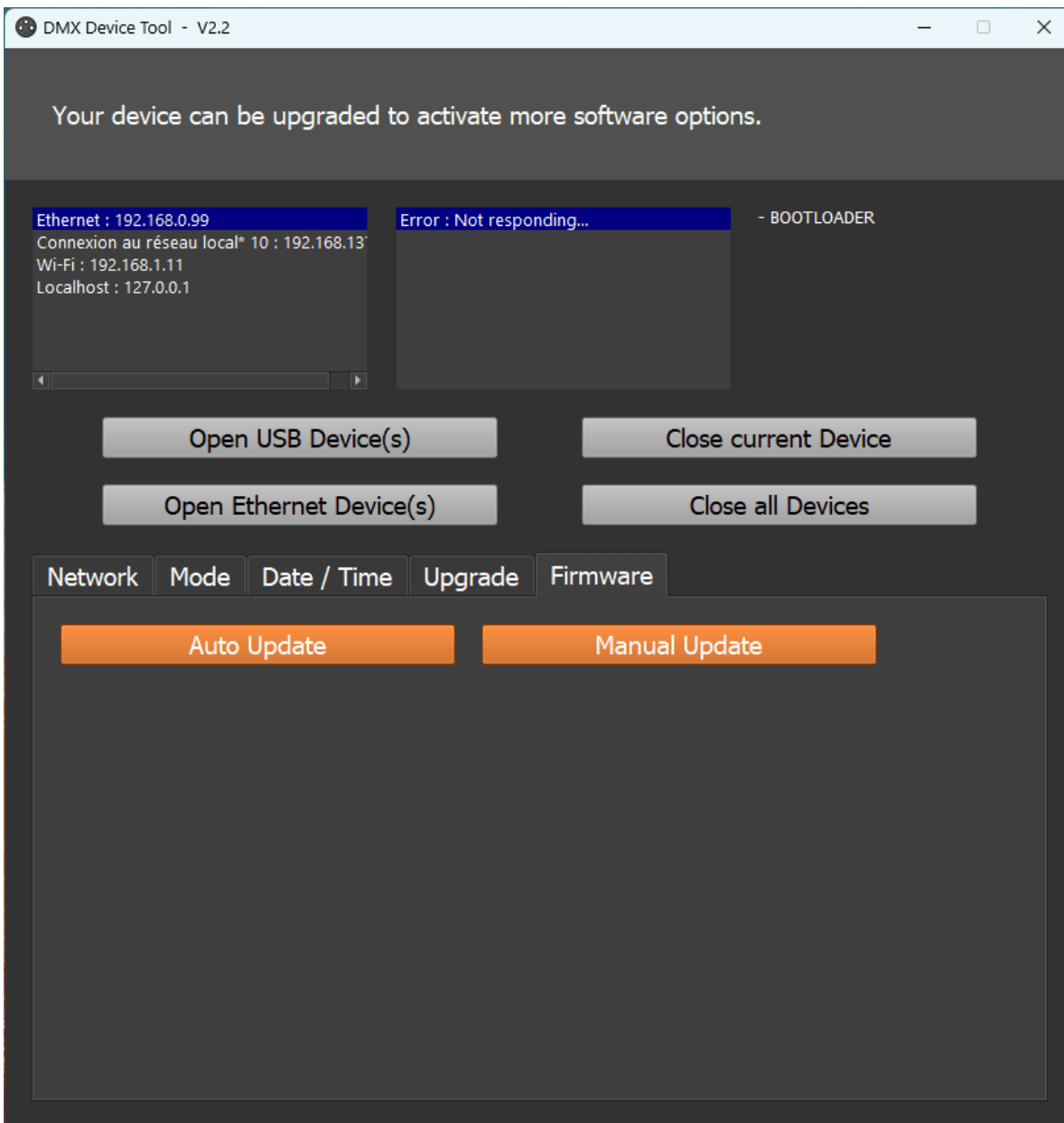


3. click "ok" to Restart the software



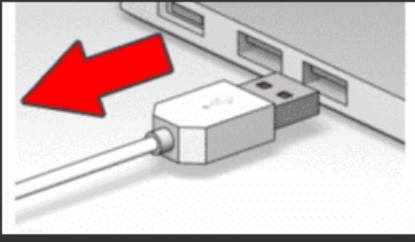
Update the device via the DeviceTool

1. Connect your device via the USB port
2. Click "Open USB Device"
3. Inside "Firmware" tab, click "Auto Update"

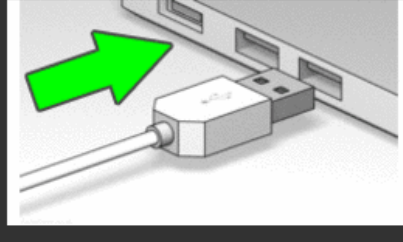


4. Unplug and replug USB cable, wait until the end of the update.

Unplug USB cable (54 s)



Replug USB cable (59 s)



Uploading... (Remaining Bytes: 205280)

5. Close the DeviceTool and unplug replug one more time the device to start on the new firmware.
6. Then use the device normally