

VPN Tutorial

It is possible to control software in live with Wi-Light 2 using a VPN.

The software is playing on a computer in live mode with smatphone server enable and Wi-Light 2 trig scenes through the VPN.

We perform our tests with Zerotier VPN : <https://www.zerotier.com/>

Getting Started with ZeroTier

Source :

<https://zerotier.atlassian.net/wiki/spaces/SD/pages/8454145/Getting+Started+with+ZeroTier>

Getting Started

There are a few things we need to do first:

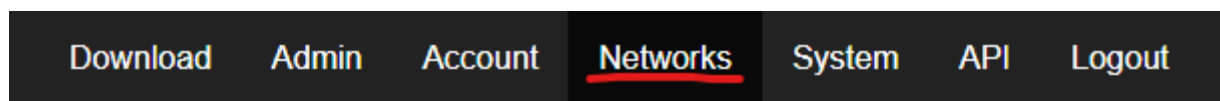
1. Download and install ZeroTier for your OS from <https://www.zerotier.com/download.shtml>.
2. Head over to <https://my.zerotier.com> and create an account in our network management portal.

Creating your first network

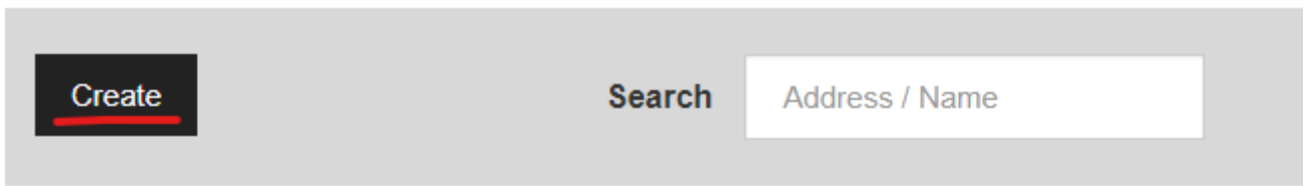
Now that you have the client installed, and your account created, it's time to create your first network. Things you'll need:

1. Your account on <https://my.zerotier.com>
2. Two or more computers to join to a network.

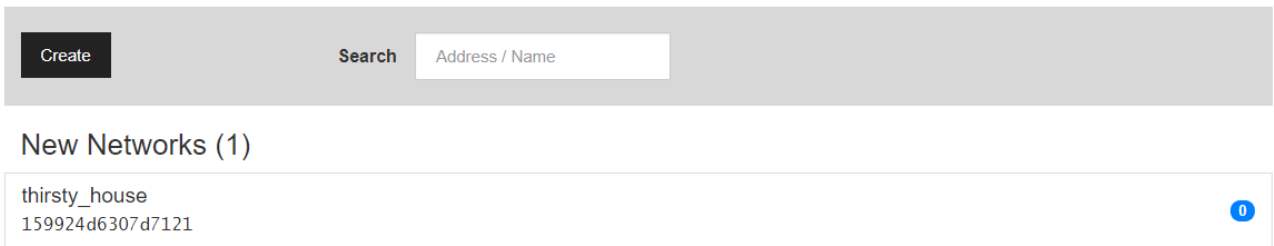
On <https://my.zerotier.com>, click the "Networks" button on the top of the screen:



Then click the "Create" button"



This will create a new private ZeroTier network and it will show up on the page like so:



The 16-digit hexadecimal code is your Network ID. In this example, it's 159924d6307d7121. Your actual network ID will be different. This network ID is what you'll use to join your devices to the network from the ZeroTier Client. See [Join a Network](#) for instructions on using the ZeroTier Client to join the network.

Once your machines are joined, click on the network you just created in your web browser. This will take you to the network configuration page. There are a lot of settings on this page, but at this point you don't need to worry about most of them. All we're concerned with right now is authorizing the computers you're adding to the network. Scroll down the page to the Members section. The 2 devices you've tried to join to the network will be listed there:


Auth?	Address	Name/Description	Managed IPs
<input type="checkbox"/>	0147282368 8a:0b:cc:18:f5:4c	(short name) (description)	fd15:9924:d630:8b0 fc25:122e:5c01:472 10.144.248.225 +
<input type="checkbox"/>	014c5ed9a4 8a:0b:c7:6e:0f:80	(short name) (description)	fd15:9924:d630:8b0 fc25:122e:5c01:4c5 10.144.190.194 +

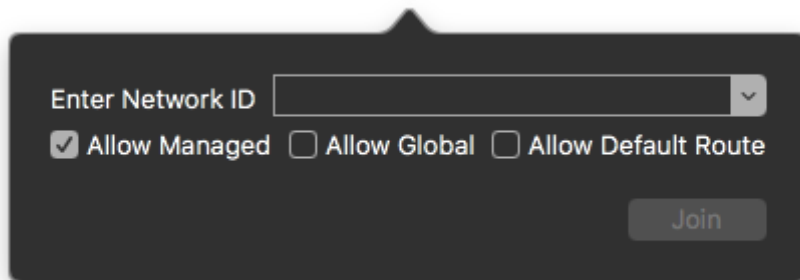
Click the check boxes under the Auth? column, and they will be authorized to join the network. Once authorized, they'll be able to communicate with each other on the IP addresses listed in the Managed IPs column.

That's all there is to it to get started.

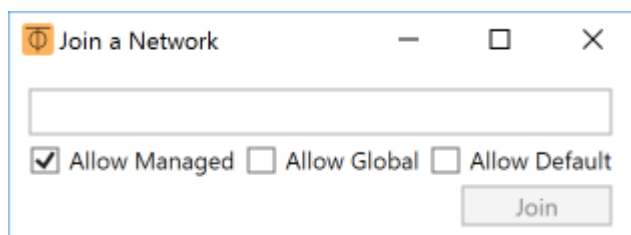
Join a Network

MacOS and Windows

On macOS, find the ZeroTier app in your menu bar. Launch the ZeroTier One app bundle if it's not already running. Click the  icon on your menu bar and select Join Network.



On Windows, the ZeroTier one UI app lives in the system tray. Right click on the ZeroTier icon and select Join Network.

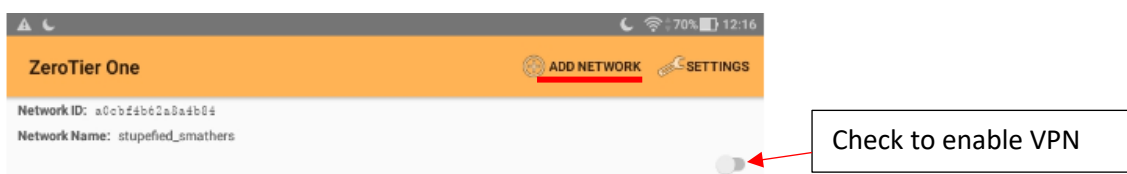


Additionally, with the macOS and Windows user interfaces, you can easily re-join networks that you've previously left.

1. Opening the main menu shows all networks you've connected to. If the network does not have a checkmark next to it, it's disconnected. Simply click the network you wish to join.
2. Click the Network Details... item in the app menu. This will bring up details of all networks known to the client. Check the Connected checkbox of the disconnected network you wish to join.

Smartphone

On Smartphone, click to Add network in the app



Use Wi-Light to control software

Once the VPN configuration is done (computer and smartphone installed and linked to the VPN), you have to start the Software and enable Smartphone serveur :

1. Go into software options and select the network tab
2. Select the Network interface "ZeroTier One xxxxxx"
3. Start Smartphone server



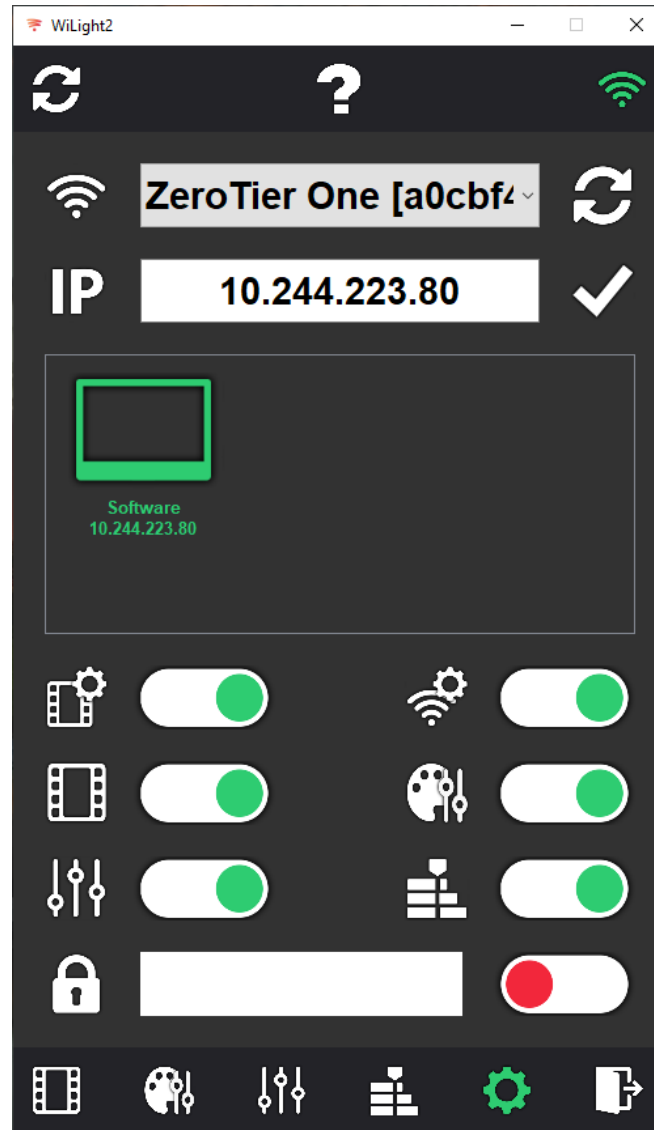
The screenshot shows a window titled "Options" with a sidebar on the left containing icons for settings, hardware, audio, ARTNET, network, and a play button. The main area is divided into several sections:

- Devices:** Network Interface: Wi-Fi : 192.168.1.13 (disabled with a red prohibition icon).
- ArtNet:** Network Interface: Wi-Fi : 192.168.1.13 (enabled with an ARTNET icon).
- 3D:** Network Interface: Localhost : 127.0.0.1 (disabled with a red prohibition icon). Below it is a "Start 3D Server" button.
- Start Smartphones server:** Network Interface: ZeroTier One [a0cbf4b62a8] (enabled with a smartphone icon). Below it is a "Stop Smartphones server" button and three radio button options:
 - Start Smartphones server manually
 - Start Smartphones server at opening
 - Start Smartphones server at Live Board opening

At the bottom right of the window, there are three icons: a blue hand cursor, a green checkmark, and a red X.

In Wi-Light 2

1. Go to options menu
2. Select the zero tier network ("tun0: ip address" on Android)
3. Enter the computer IP in IP field to find it
4. Now scenes are displayed and ready to play



You can find computer address on your network management:

Auth?	Address	Name/Description	Managed IPs
<input type="checkbox"/>	0147282368 8a:0b:cc:18:ff:4c	(short name) (description)	fd15:9924:d630:8b0 fc25:122e:5c01:472 10.144.248.225 +
<input type="checkbox"/>	014c5ed9a4 8a:0b:c7:6e:0f:80	(short name) (description)	fd15:9924:d630:8b0 fc25:122e:5c01:4c5 10.144.190.194 +