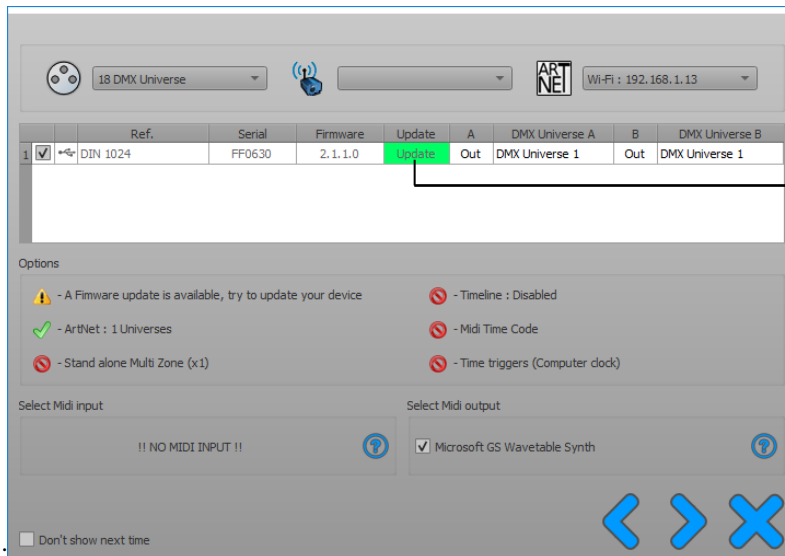


How to update your Device

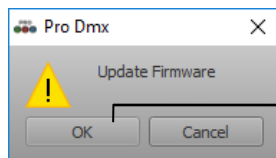
After download and install a new software release, the software may ask you to update the firmware of the connected interface if a new firmware is available for your device.

1) Update interfaces with the software start wizard :

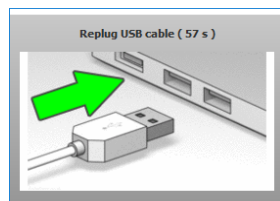
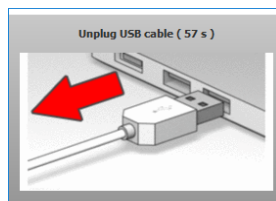
The first way is to use the starting windows when all the devices connected appears



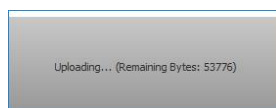
When a new firmware update is available, « Update » column is in green, you just need to click on it to start the updating process.



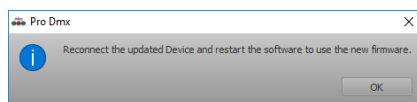
The first warning ask you to confirm the update



Next step Unplug and replug the device to start the updating process

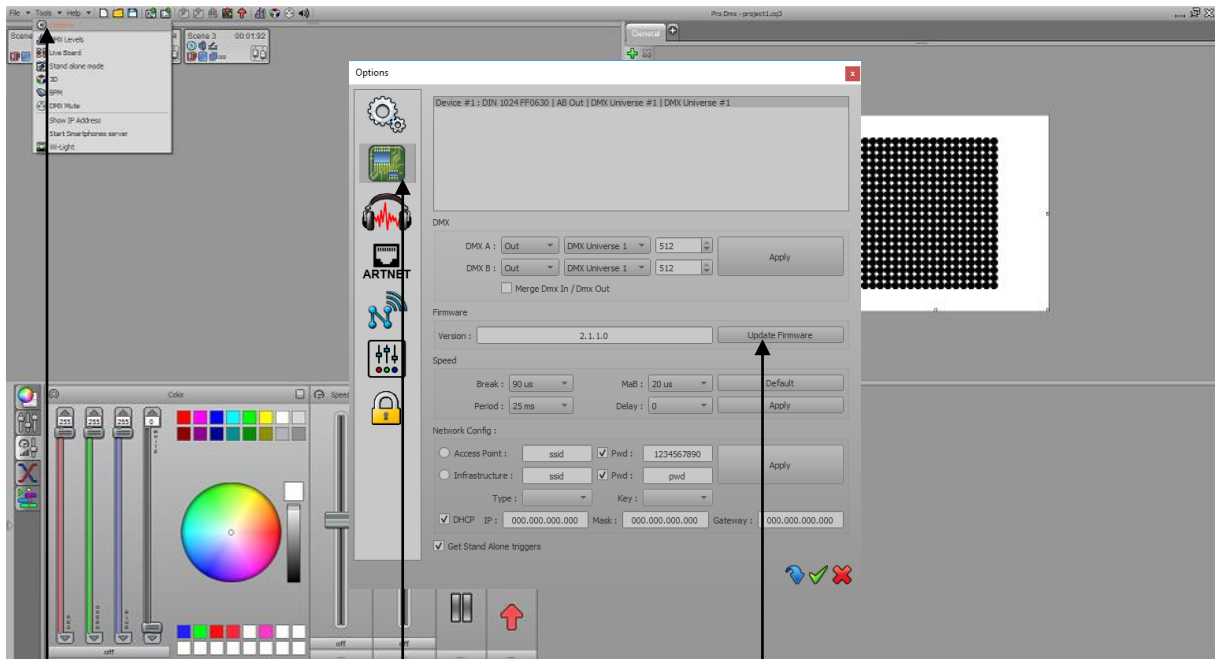


Wait until the end of the update process (never unplug device during the uploading or the device will turn in bootloader mode)



Unplug replug the device and click to « OK » to use the new firmware

2) Update interfaces from the software general options :



In the software click on « Tools » and « Options ».

Go to Device tab.

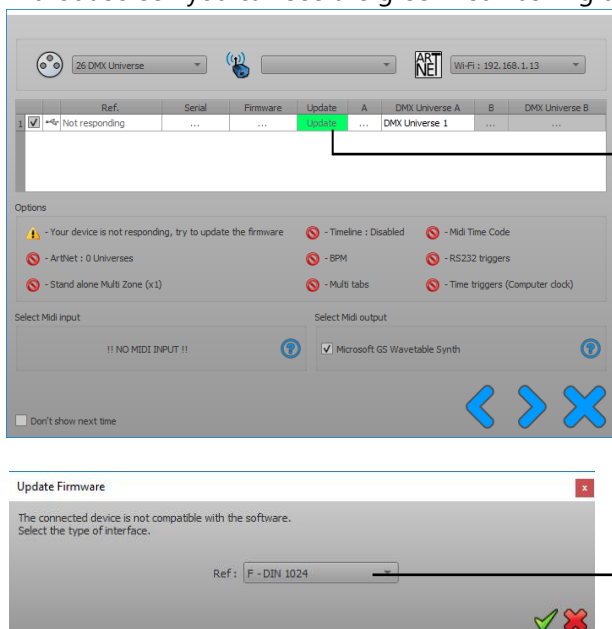
Select « Update Firmware » to start the process as explained before. If no new firmware is available, then the update option won't be activated.

3) Recovery the update firmware process and Boot loader


When there was a problem during the firmware update process, like an usb disconnection or a device unplugged by accident or user forget to plug again the interface to complete the update process... Cards go in firmware recovery mode or Boot Loader mode (BL).

In this mode you can't use your card with the software but you still can recover the firmware and complete the firmware update process and repair the interface easily.

If your device have a display you can see « bl » to inform you that it wait for a firmware, for devices without screen you can see the green Led flashing quickly.



The card is not responding but « Update » is in green, you can do the update by clicking on it.

Because the card is not responding you have to enter the type of interface. Then click on validate  and complete the update process as explained before