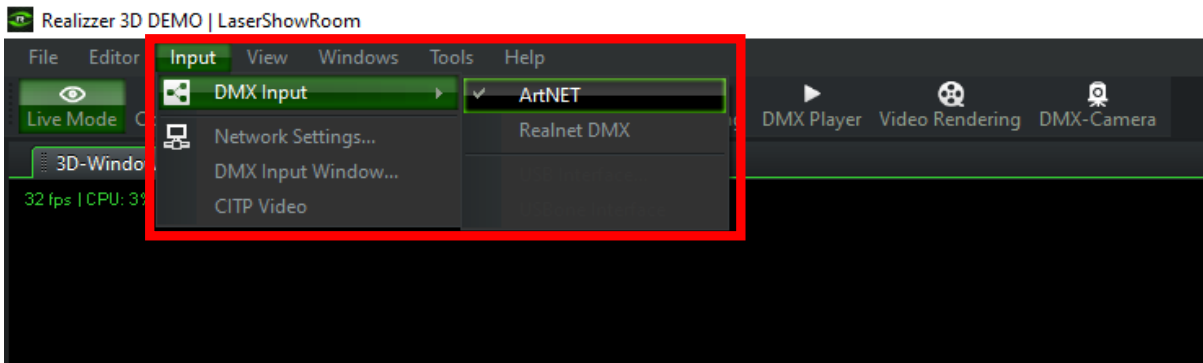


How to control Realizzer with all the Chromateq Software

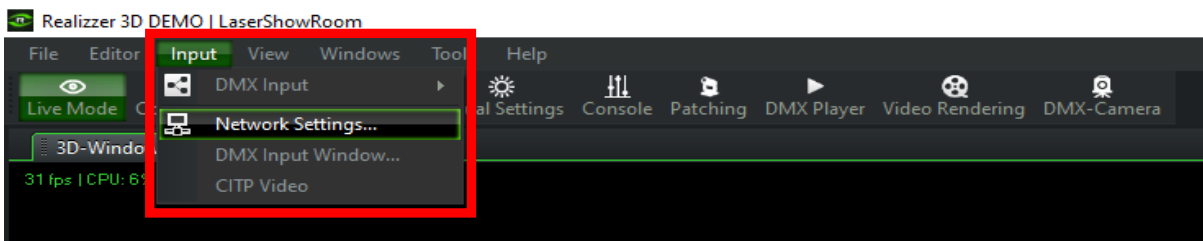
1. Enable Artnet in in Realizzer

Click to **Input** -> **DMX input** -> **ArtNET**
Deselect Realnet DMX if selected.

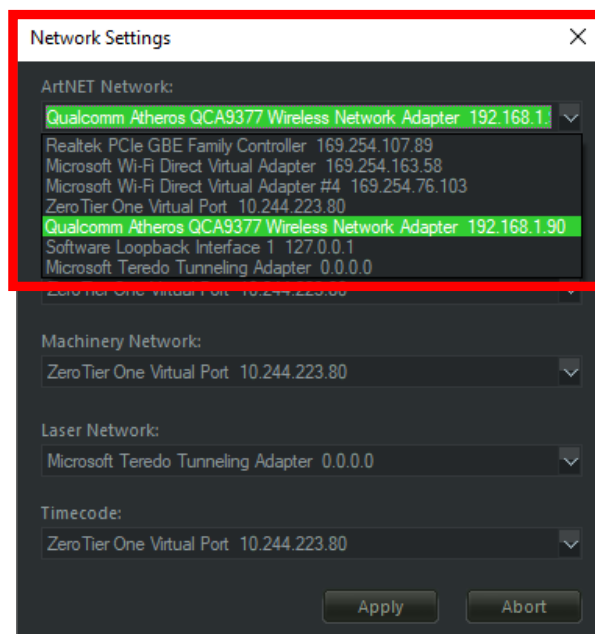


2. Select the network interface you want to use to communicate between software

Click to **Input** -> **Network Settings**

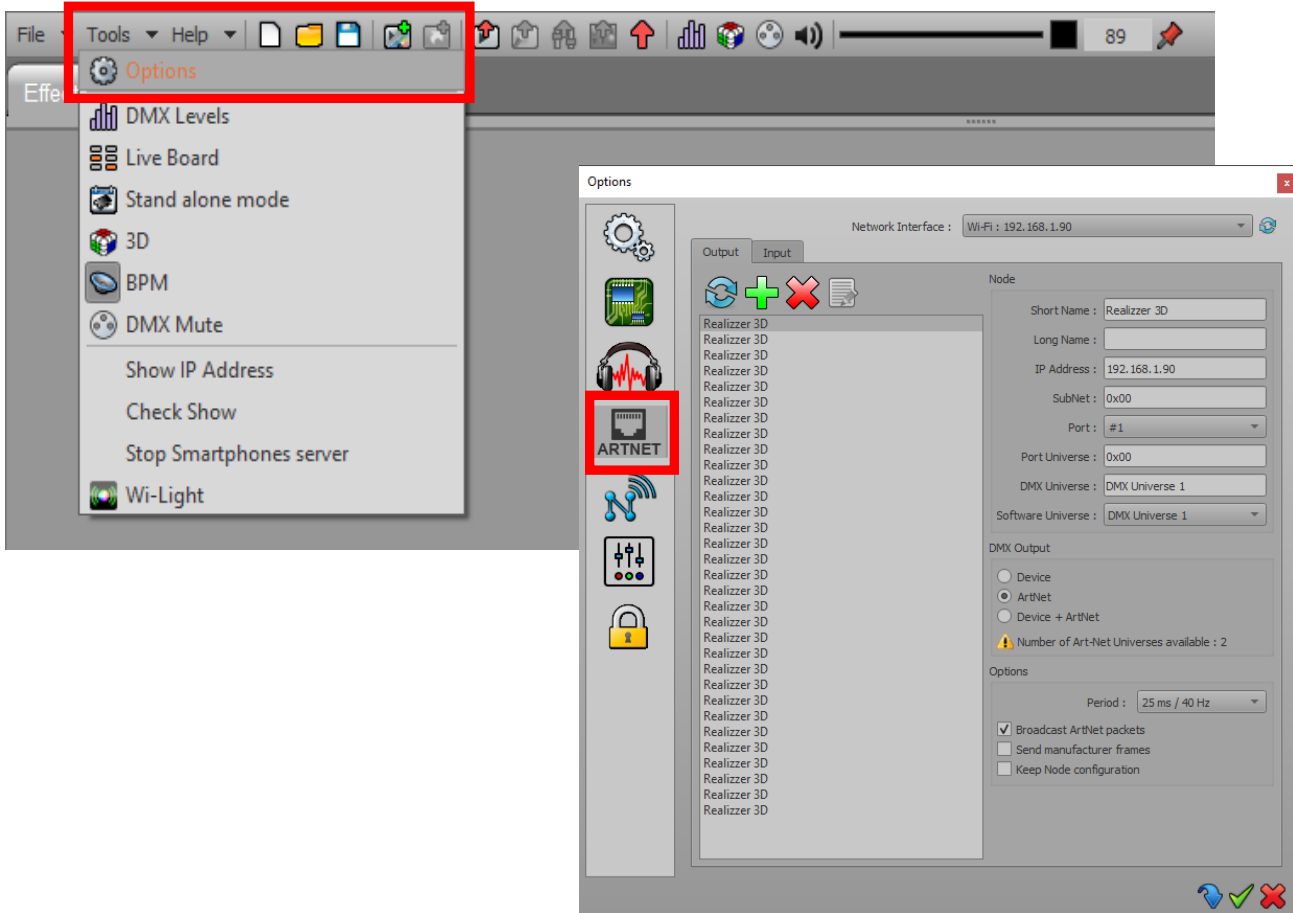


Then select the desired network in **ArtNET Network** field and apply

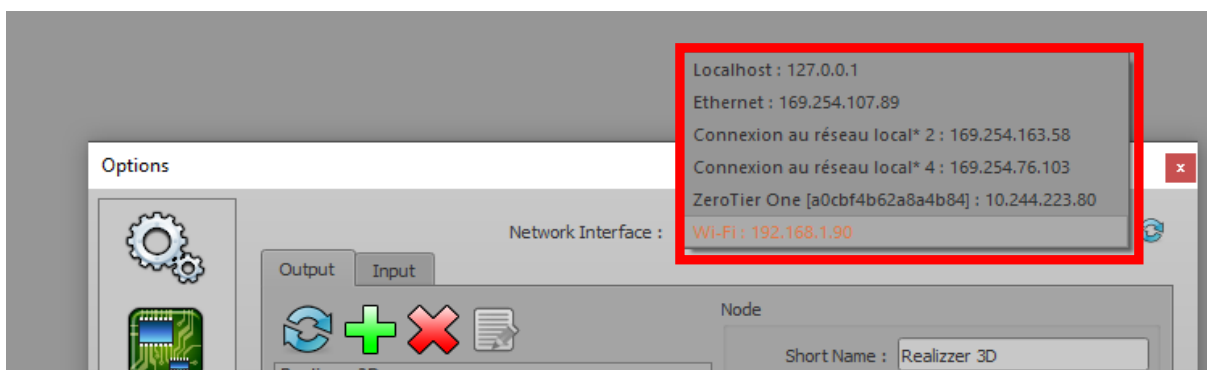


3. Configure Artnet in the Chromateq Software

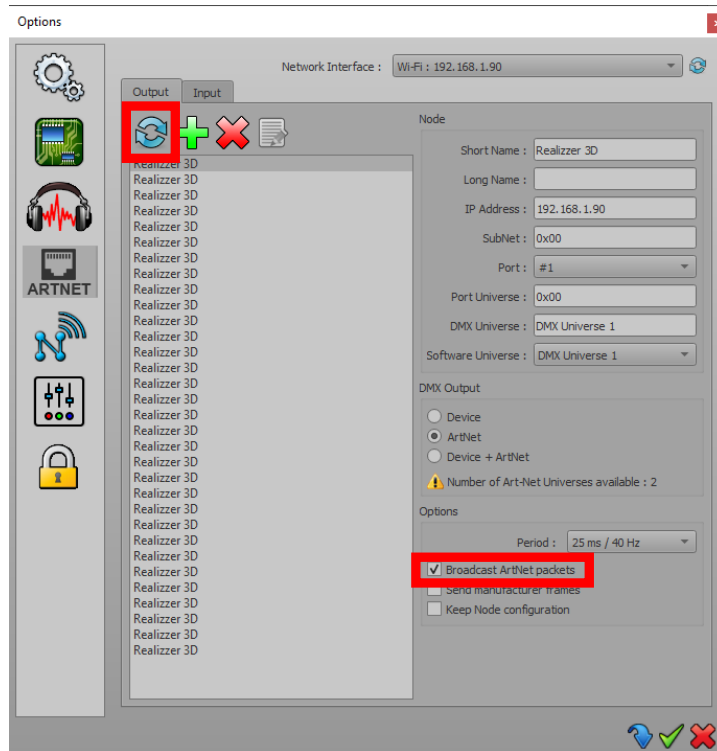
In the Chromateq software go to **Tools** -> **Option** -> **ArtNET** tab



Then select the same **Network Interface** as set in Realizer

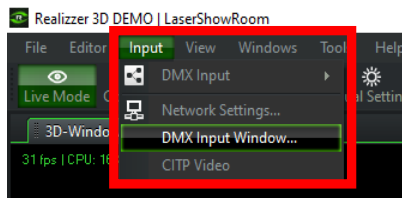


Next click to **Refresh** to discover all Realizer nodes and enable **Broadcast ArtNET packets**



Once the connection is established you can check if it works correctly:

1. In Realizer click to **Input -> DMX input Windows**



2. Move DMX channels in our software and check in the Dmx input windows channels moving synchronized.

