



# **How to control other software with Pro Software via MIDI**



**Introduction**..... 3

**Midi virtual port**..... 3

**MATRIX software** ..... 4

    Configure the Midi inputs.....4

    Create the Midi triggers.....5

    Exemple of triggerable actions .....6

**PRO software**..... 7

    Configure the Midi inputs.....7

    Create the buttons to trigger the matrix software .....8

    Example of trigger correspondences.....9

**Play your show** ..... 10

## INTRODUCTION

With very big project including big matrix, it is more convenient to use our LED matrix software to control directly the light under matrix configuration.

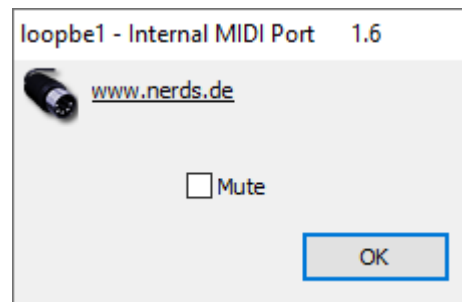
But it is not easy to use two software at the same time and synchronize them for trigger and play the effects immediately. To solve this problem is it possible to communicate between our software with the standard MIDI protocol and a small MIDI software toll to bridge the 2 software and link them together.

## MIDI VIRTUAL PORT

The first step is to **install a virtual midi port** on your computer to allow communication between different software.

You can find on internet some free tools like **LoopBe1**. They are many free software tools like this on the web, choose the one you prefer.

Then you just need to download, install and run it.

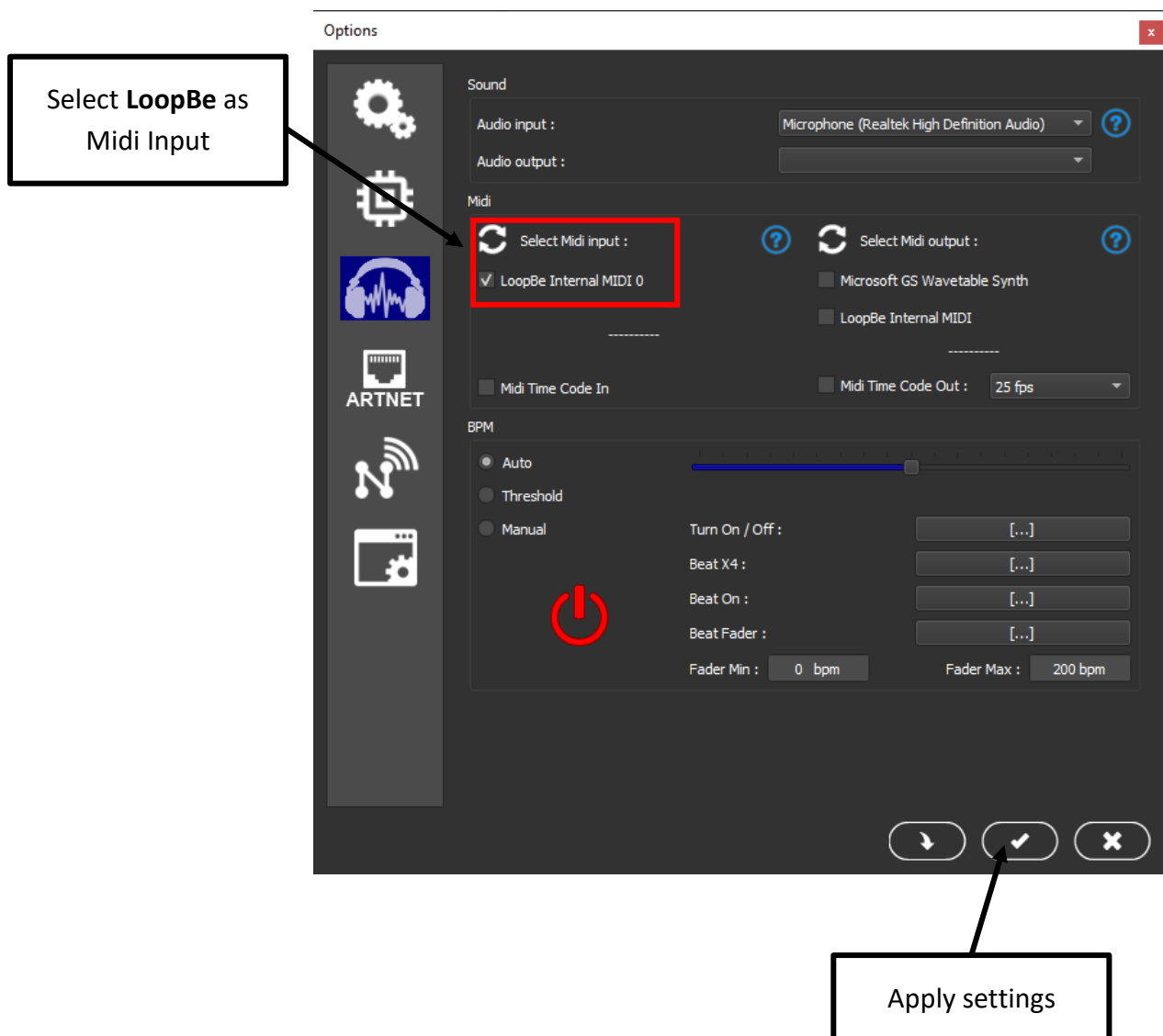


**Now you can configure software to communicate with midi on the virtual midi port**

CONFIGURE THE MIDI INPUTS

In the software go to **Tools -> Options** and select the **Audio/Midi** tab.

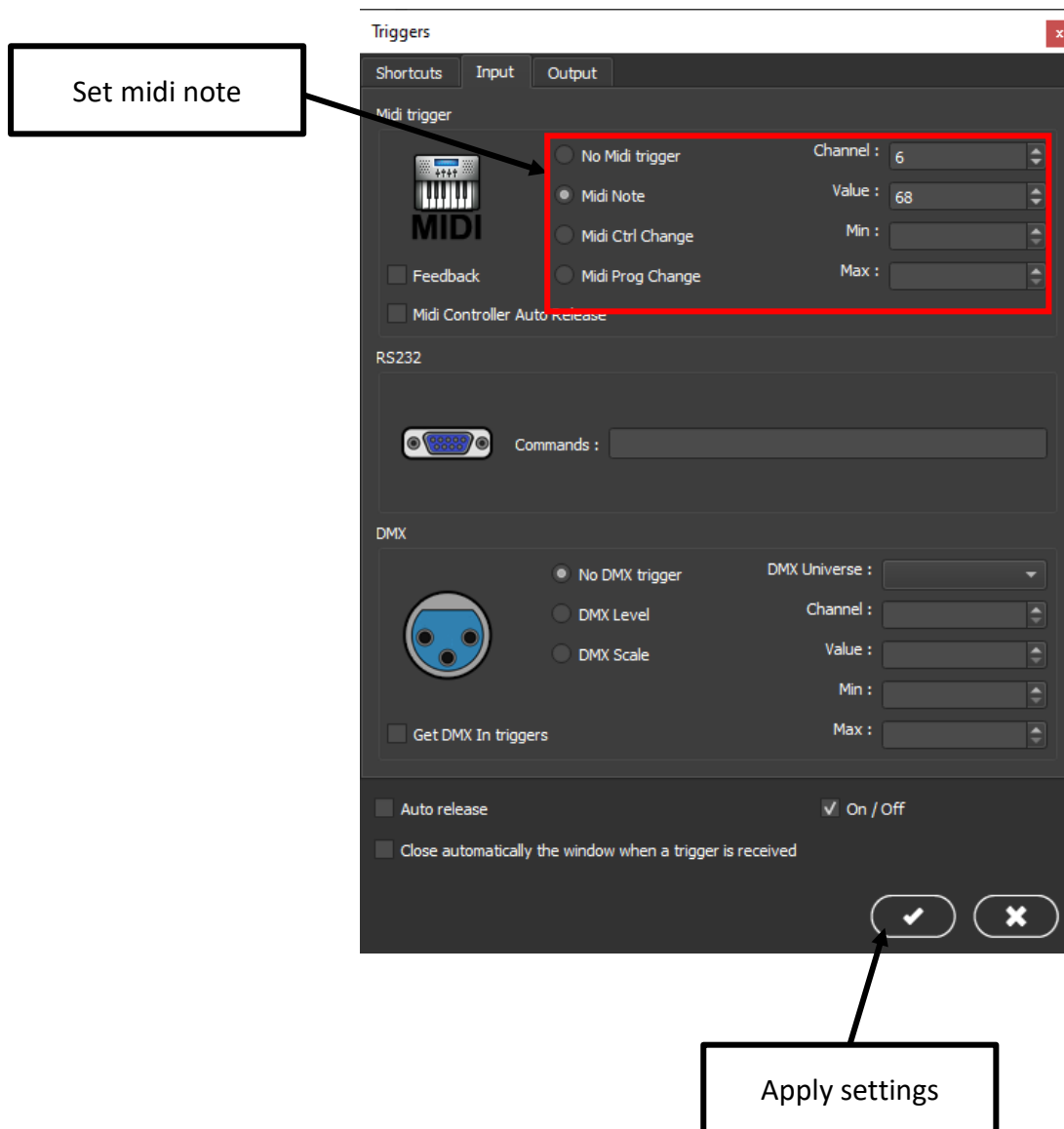
Then select the MIDI input option and the available MIDI port.



## CREATE THE MIDI TRIGGERS

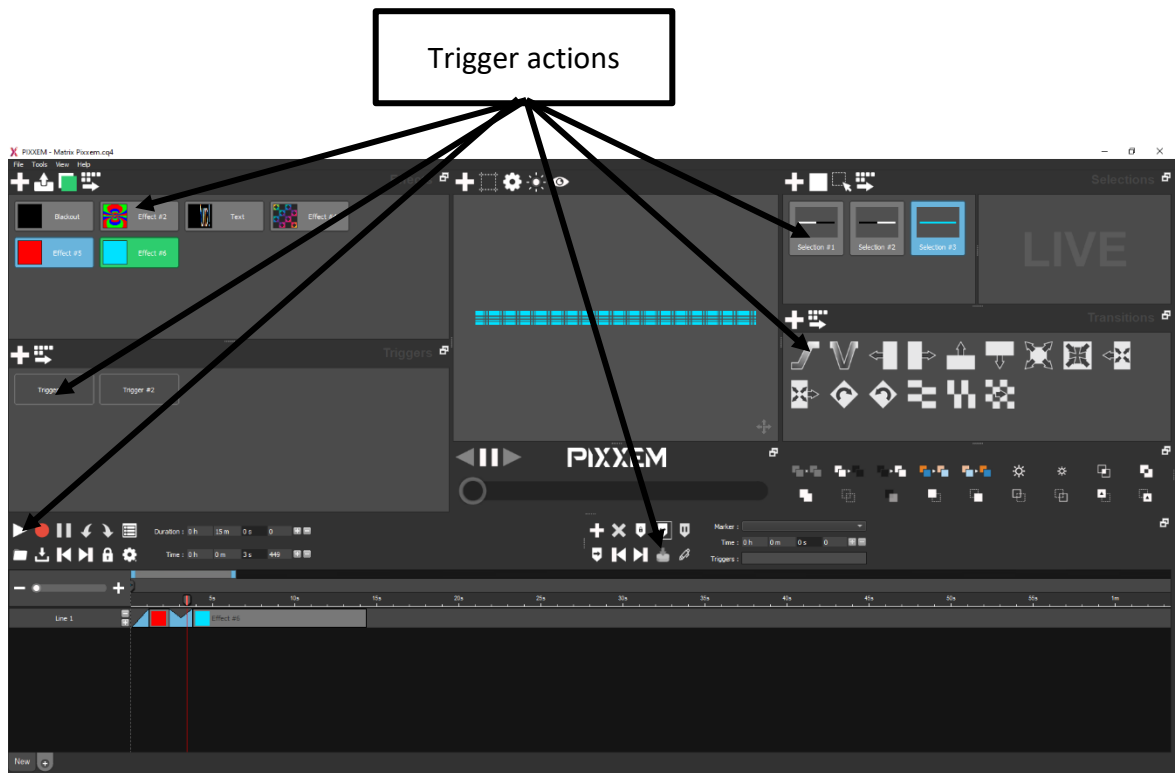
You need to define a MIDI note for all actions that you want to control in the software: Effects, Triggers, Selections, Fades, Timeline (Start, Marker)...

Go to triggers assignation of the button or action to do and set a MIDI note in the **Input** tab:



## EXEMPLE OF TRIGGERABLE ACTIONS

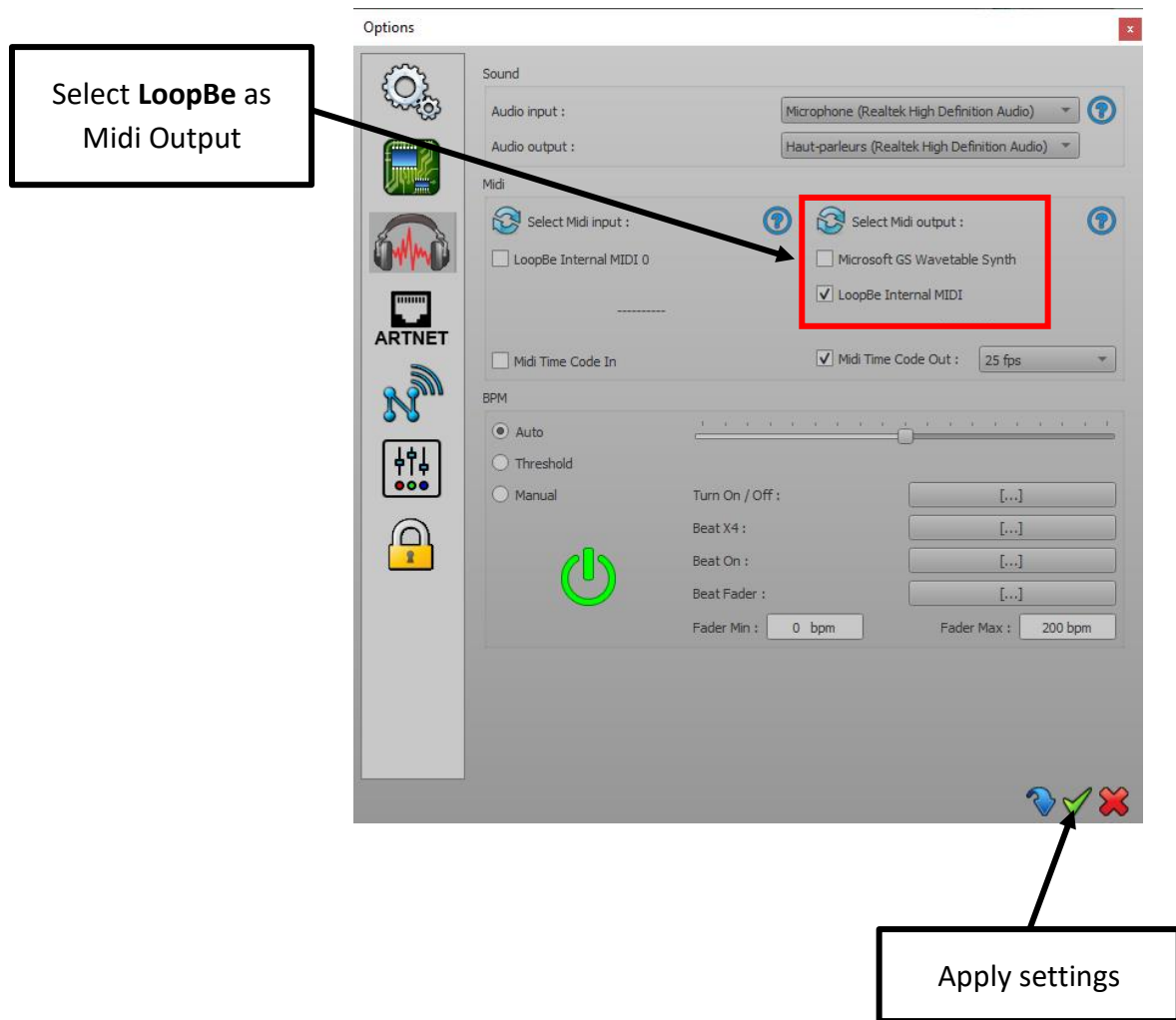
You can Trigger Effect buttons, Transitions, pixel selection and the timeline via the MIDI triggers.



CONFIGURE THE MIDI INPUTS

In the software go to **Tools** -> **Options** and select the **Audio/Midi** tab:

Then select the MIDI output option and the available MIDI port.



When the 2 MIDI virtual ports are selected from the 2 software as input and output, the bridge and MIDI link is done and effective.

## CREATE THE BUTTONS TO TRIGGER THE MATRIX SOFTWARE

To trigger the matrix software, you have to create a scene button or a trigger button from the PRO software and set a MIDI note as output. This MIDI note is corresponding to the action that you want to trigger from the Matrix software and setup as input.

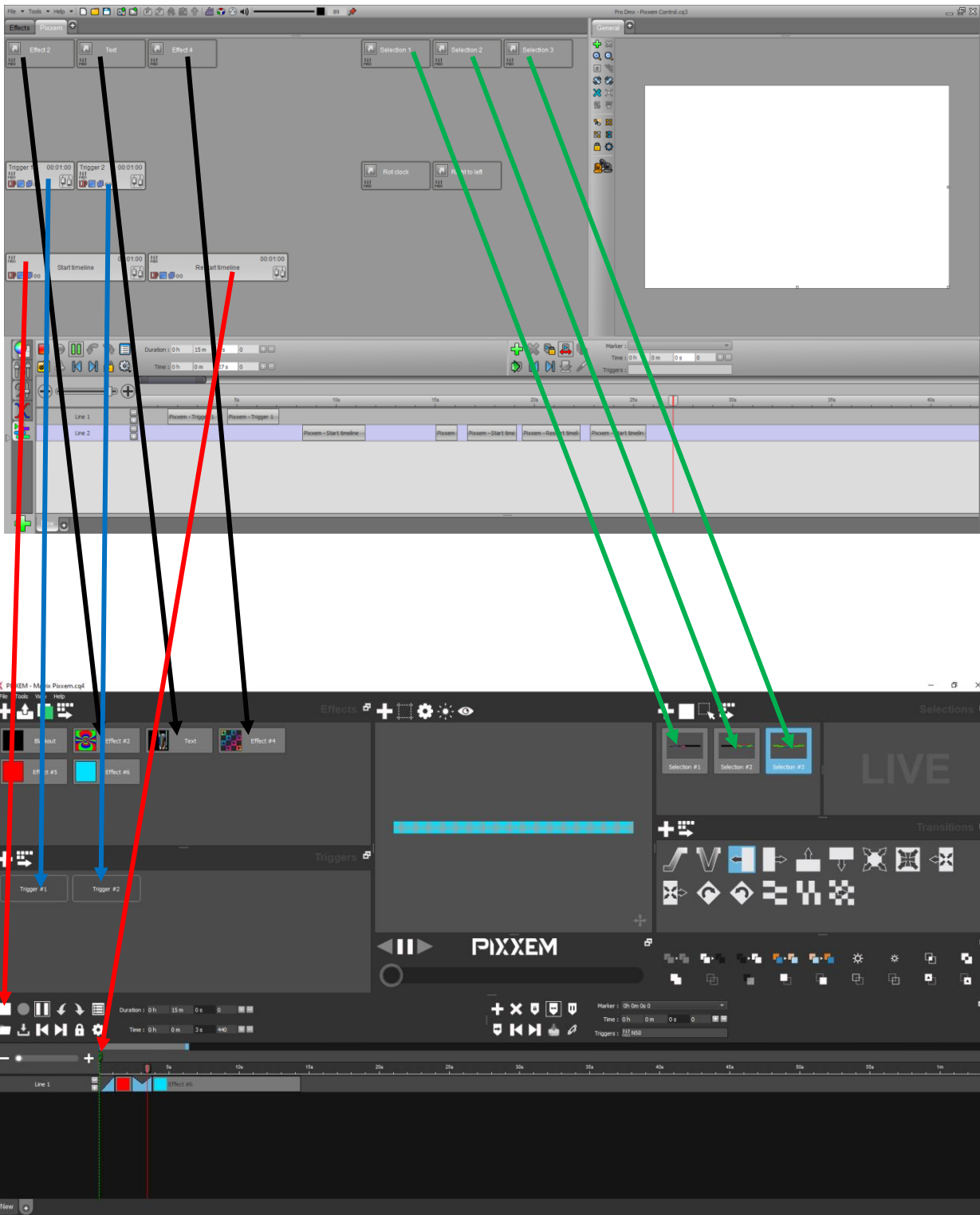
For scene button add a step with no DMX levels to be able to play the scene.



For triggers buttons you can select **Start/Stop**, **On/Off** or **Auto release** and **Auto Release** or **Start only** for scenes buttons to have the reaction you want to have in the other software.



# EXAMPLE OF TRIGGER CORRESPONDENCES



## PLAY YOUR SHOW

Once the two software are correctly configured, you just have to play Pro software buttons to see the corresponding action in matrix software playing.

You can also add the scenes in the timeline to synchronise the two software, you just need to add a scene corresponding to the matrix software desired action.

You can add a second time the scene button to stop the action, like On/Off trigger.

